



GLOBE POND ROAD SE16
1 bedroom terraced house

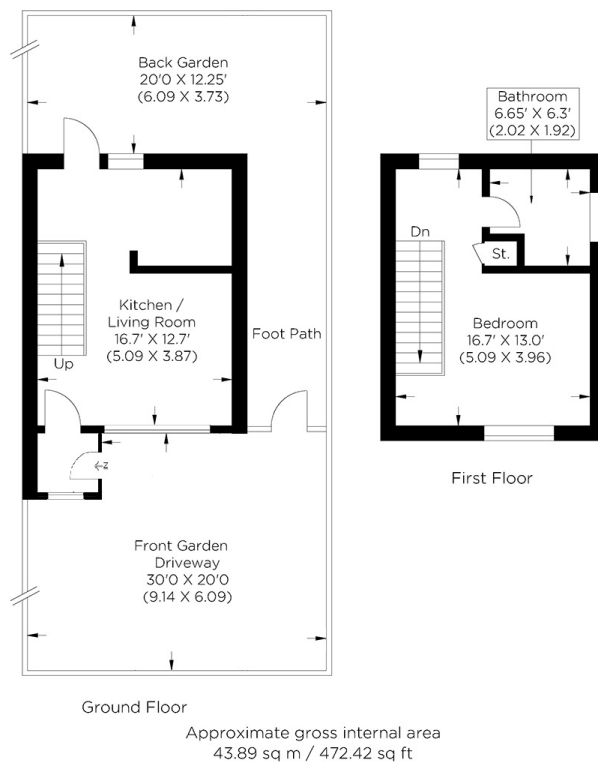
£400,000
SOLD



GLOBE POND ROAD SE16

Offered to the market is this highly sought-after and rarely available one-bedroom house in Globe Pond Road, Rotherhithe SE16. The welcoming porch opens to a modern open-plan reception room and a spacious kitchen with direct access to a well-maintained and sunny garden. The large double bedroom and a stylish three-piece bathroom are on the first floor. This superb home benefits from a driveway, off-street parking, central heating, and ample storage space. Surrey Quays retail hub is within easy reach alongside many local amenities, as is Canada Water Station, providing excellent transport links. The picturesque Russia Dock Woodland offers the perfect setting for a picnic with friends, completed by a pleasant stroll to take in the sublime vistas across the London skyline. The sellers offer the property with no onward chain. We recommend booking a viewing appointment.

Borough: Southwark* Council Tax: C* EPC: D



Rotherhithe & Bermondsey Office
146 Lower Road, London SE16 2UG

t: 020 7237 6767 e: rotherhithe@alexneil.com

Disclaimer: Property descriptions are subjective and used in good faith as an opinion rather than statements of fact. The owner provided information relating to title, tenure, service charges and ground rent information. Therefore, please make specific enquiries to ensure that our descriptions match your expectations of the property. Floor plan measurements are approximate and for illustrative purposes only. Furthermore, we have not tested any services, systems or appliances at this property. And we strongly recommend that you verify all the provided information on inspection and that your surveyor and conveyancer further confirm details. Also, market conditions and property values regularly fluctuate. And showcased sold properties demonstrate our previous successes rather than indicate live property values. *As advised by the owner. **Property sold subject to contract.



ALEX NEIL

ESTATE AGENTS SINCE 1984