



BARNFIELD PLACE E14  
**3 bedroom end of terrace**

**£730,000**  
SOLD



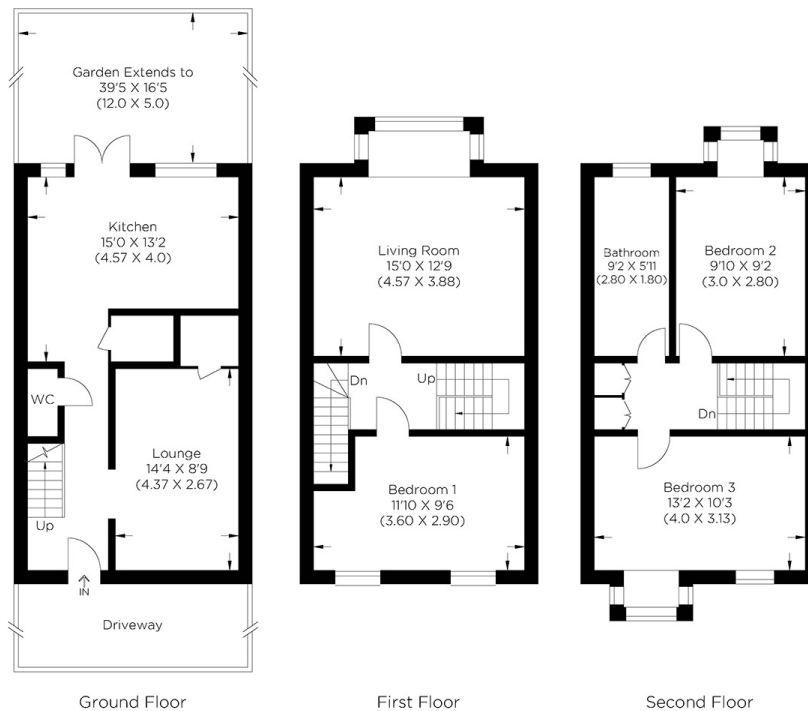


# BARNFIELD PLACE E14

This chain-free freehold three-bedroom townhouse in Barnfield Place, Isle of Dogs E14, is on a quiet cul-de-sac in a residential development moments from Mudchute Park. This stunning property boasts a generous private garden, family bathroom and downstairs WC, and the converted garage is a second reception room. The house comprises three double bedrooms with ample storage, a spacious reception room and a modern kitchen dinner with double patio doors leading out to the very well-kept private garden. Transport links near the property include Mudchute Park DLR Station and bus routes to link you with Canary Wharf and The City. Barnfield Place is close to many local shops, restaurants, bars, and the Thames Clipper River Boat, providing a great way to get to Central London. We highly recommend internal viewings.

Borough: Tower Hamlets\* Council Tax: D\* EPC: D

Nearest Station: Mudchute (0.25 miles) Material Information: [www.alexneil.com/material-information](http://www.alexneil.com/material-information)



Ground Floor

First Floor

Second Floor

Approximate gross internal area  
120.77 sq m / 1299.95 sq ft

## Canary Wharf & Docklands Office

2 Westferry Road, Canary Wharf, London E14 8JT

t: 020 7537 9859 e: [canarywharf@alexneil.com](mailto:canarywharf@alexneil.com)

Disclaimer: Property descriptions are subjective and used in good faith as an opinion rather than statements of fact. The owner provided information relating to title, tenure, service charges and ground rent information. Therefore, please make specific enquiries to ensure that our descriptions match your expectations of the property. Floor plan measurements are approximate and for illustrative purposes only. Furthermore, we have not tested any services, systems or appliances at this property. And we strongly recommend that you verify all the provided information on inspection and that your surveyor and conveyancer further confirm details. Also, market conditions and property values regularly fluctuate. And showcased sold properties demonstrate our previous successes rather than indicate live property values. \*As advised by the owner. \*\*Property sold subject to contract.



# ALEX NEIL

ESTATE AGENTS SINCE 1984

2024 signifies our **40th Anniversary**, and we are immensely proud to have reached this impressive longevity milestone. In celebration, we launched an **exceptional promotion** for sellers, affording them increased marketing exposure for free!

**40 years of expertise:** With four decades of experience, we bring a wealth of knowledge and expertise. Our durability is a testament to the trust satisfied clients place in us. We understand the nuances of the diverse neighbourhoods we cover. Our local expertise allows us to provide tailored solutions, whether you're buying or selling, allowing you to move with confidence.



ALEX NEIL

ESTATE AGENTS SINCE 1984

[www.alexneil.com](http://www.alexneil.com)