



TOWERGATE HOUSE E3
1 bedroom apartment

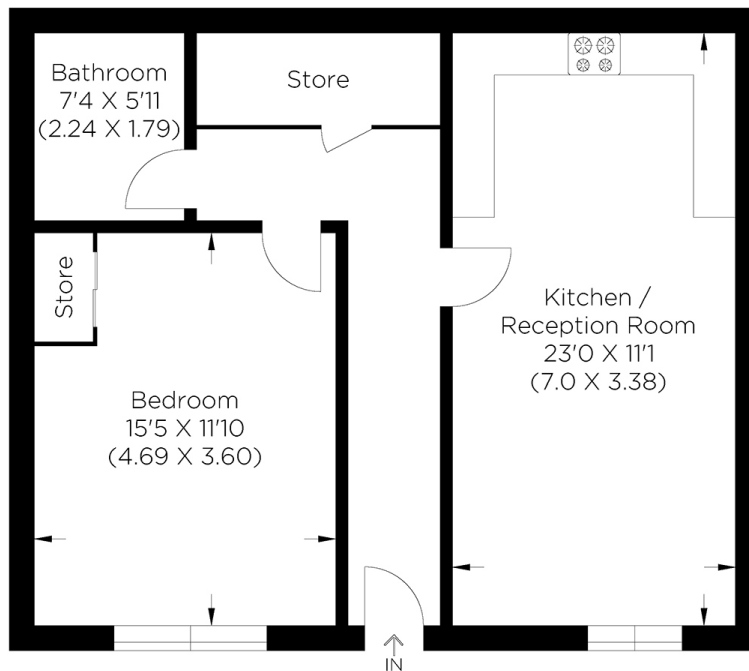
£300,000
SOLD



TOWERGATE HOUSE E3

Located in Towergate House, Ordell Road, Bow E3, on the cusp of the desirable Bow conservation area, this larger-than-average one-bedroom apartment offers excellent space and light. The welcoming hallway leads to a contemporary open-plan kitchen, a generous living space, a substantial double bedroom, and a modern family bathroom. Ideally placed for the commuter, the City or Canary Wharf are within easy reach. There are Central, District and Hammersmith & City line connections and the DLR at Bow Church. The stunning green space of Victoria Park provides a beautiful setting for a weekend stroll before heading for some great food and drinks at one of many desirable gastro pubs, including the Morgan and Coborn Arms. The historic Roman Road fulfils most desires with the vast array of shops, coffee shops and the great market. We highly recommend booking a viewing appointment.

Borough: Tower Hamlets* Council Tax: C* EPC: TBA Lease Term: 110 years* Service Charge: £1,300* Ground Rent: £200*
Nearest Station: Bow Road (0.22 miles) Material Information: www.alexneil.com/material-information



Approximate gross internal area
59.33 sq m / 638.62 sq ft

Canary Wharf & Docklands Office
2 Westferry Road, Canary Wharf, London E14 8JT

t: 020 7537 9859 e: canarywharf@alexneil.com

Disclaimer: Property descriptions are subjective and used in good faith as an opinion rather than statements of fact. The owner provided information relating to title, tenure, service charges and ground rent information. Therefore, please make specific enquiries to ensure that our descriptions match your expectations of the property. Floor plan measurements are approximate and for illustrative purposes only. Furthermore, we have not tested any services, systems or appliances at this property. And we strongly recommend that you verify all the provided information on inspection and that your surveyor and conveyancer further confirm details. Also, market conditions and property values regularly fluctuate. And showcased sold properties demonstrate our previous successes rather than indicate live property values. *As advised by the owner. **Property sold subject to contract.



ALEX NEIL

ESTATE AGENTS SINCE 1984