



HERA COURT E14
1 bedroom apartment

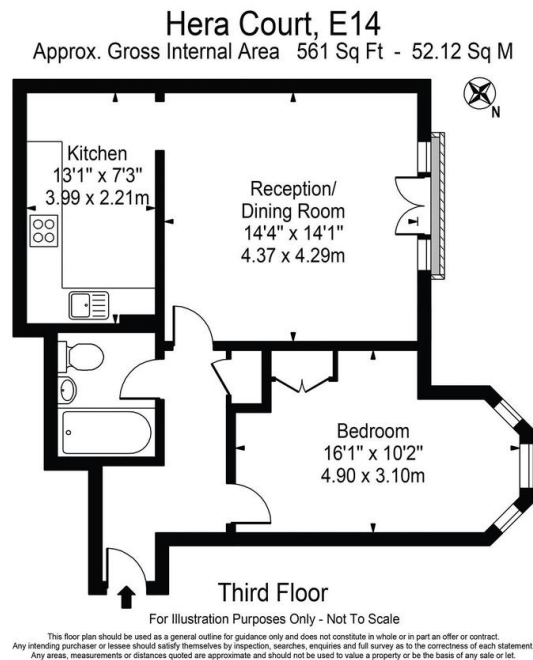
£330,000
SOLD



HERA COURT E14

This modern one-bedroom apartment is in the highly desirable riverside development Cyclops Wharf, Isle of Dogs E14. Hera Court offers outstanding residents facilities, including concierge services, a gymnasium, swimming pool, sauna and steam room. The leisure facilities are a wonderful space to take time out at the weekend after a long week or grab a quick morning workout to set yourself up for the day. The apartment is on the fourth floor. It boasts a generous reception room with expansive windows and a Juliet balcony welcoming abundant natural light, a fitted kitchen with space for dining, a spacious bedroom and a stylish bathroom. The property features an allocated parking space, and Cyclops Wharf is close to Mudchute and Island Gardens DLR Stations and Masthouse Terrace Pier (Thames Clipper services), offering excellent links for commuters.

Borough: Tower Hamlets* Council Tax: D* EPC: TBA Lease Term: 92 years* Service Charge: £4,000* Ground Rent: £100*
Nearest Station: Mudchute (0.44 miles) Material Information: www.alexneil.com/material-information



Canary Wharf & Docklands Office
2 Westferry Road, Canary Wharf, London E14 8JT

t: 020 7537 9859 e: canarywharf@alexneil.com

Disclaimer: Property descriptions are subjective and used in good faith as an opinion rather than statements of fact. The owner provided information relating to title, tenure, service charges and ground rent information. Therefore, please make specific enquiries to ensure that our descriptions match your expectations of the property. Floor plan measurements are approximate and for illustrative purposes only. Furthermore, we have not tested any services, systems or appliances at this property. And we strongly recommend that you verify all the provided information on inspection and that your surveyor and conveyancer further confirm details. Also, market conditions and property values regularly fluctuate. And showcased sold properties demonstrate our previous successes rather than indicate live property values. *As advised by the owner. **Property sold subject to contract.

ALEX NEIL

ESTATE AGENTS SINCE 1984