



ALTIMA COURT SE22
2 bedroom apartment

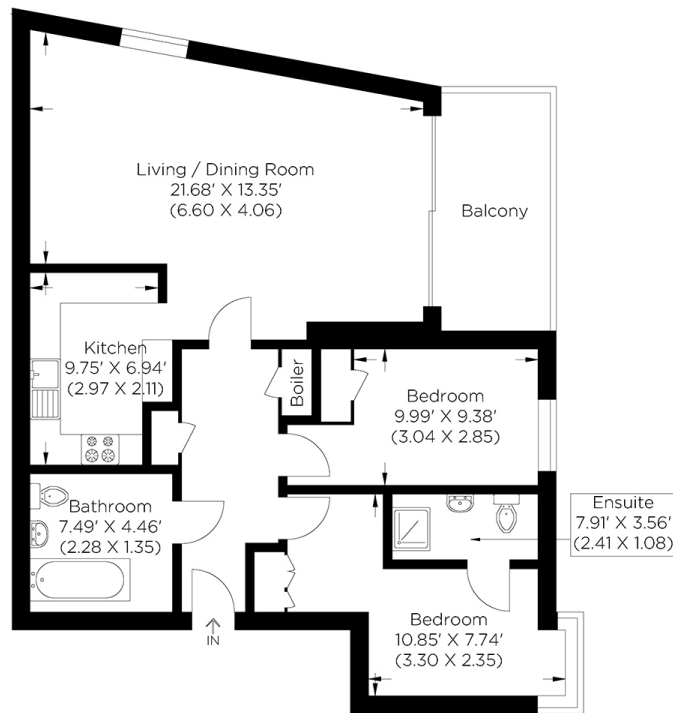
£550,000
SOLD



ALTIMA COURT SE22

We present a contemporary two-bedroom apartment set on the first floor of the luxurious Altima Court, East Dulwich Road, East Dulwich SE22. This dual-aspect property combines generous living space, plenty of natural light and cutting-edge architecture. The apartment has been finished to a high specification and has the added benefit of being offered in spectacular condition. Presenting a spacious open space lounge leading to a private balcony offering stunning views over the famous Goose Green, a fitted kitchen with integrated appliances, two double bedrooms, an en-suite to the master, a modern family bathroom, further storage space and a parking space. Set in the heart of the notable East Dulwich Road, this property offers excellent transport links and fantastic local amenities nearby, including the trendy Lordship Lane with its array of tempting food parlours and eateries.

Borough: Southwark* Council Tax: D* EPC: C Lease Term: 133 years* Service Charge: £2,300* Ground Rent: £300*
Nearest Station: East Dulwich (0.43 miles) Material Information: www.alexneil.com/material-information



Approximate gross internal area
71.12 sq m / 765.52 sq ft

Rotherhithe & Bermondsey Office
146 Lower Road, London SE16 2UG

t: 020 7237 6767 e: rotherhithe@alexneil.com

Disclaimer: Property descriptions are subjective and used in good faith as an opinion rather than statements of fact. The owner provided information relating to title, tenure, service charges and ground rent information. Therefore, please make specific enquiries to ensure that our descriptions match your expectations of the property. Floor plan measurements are approximate and for illustrative purposes only. Furthermore, we have not tested any services, systems or appliances at this property. And we strongly recommend that you verify all the provided information on inspection and that your surveyor and conveyancer further confirm details. Also, market conditions and property values regularly fluctuate. And showcased sold properties demonstrate our previous successes rather than indicate live property values. *As advised by the owner. **Property sold subject to contract.



ALEX NEIL

ESTATE AGENTS SINCE 1984

2024 signifies our **40th Anniversary**, and we are immensely proud to have reached this impressive longevity milestone. In celebration, we launched an **exceptional promotion** for sellers, affording them increased marketing exposure for free!

40 years of expertise: With four decades of experience, we bring a wealth of knowledge and expertise. Our durability is a testament to the trust satisfied clients place in us. We understand the nuances of the diverse neighbourhoods we cover. Our local expertise allows us to provide tailored solutions, whether you're buying or selling, allowing you to move with confidence.



ALEX NEIL

ESTATE AGENTS SINCE 1984

www.alexneil.com