



MATHAM GROVE SE22
1 bedroom apartment

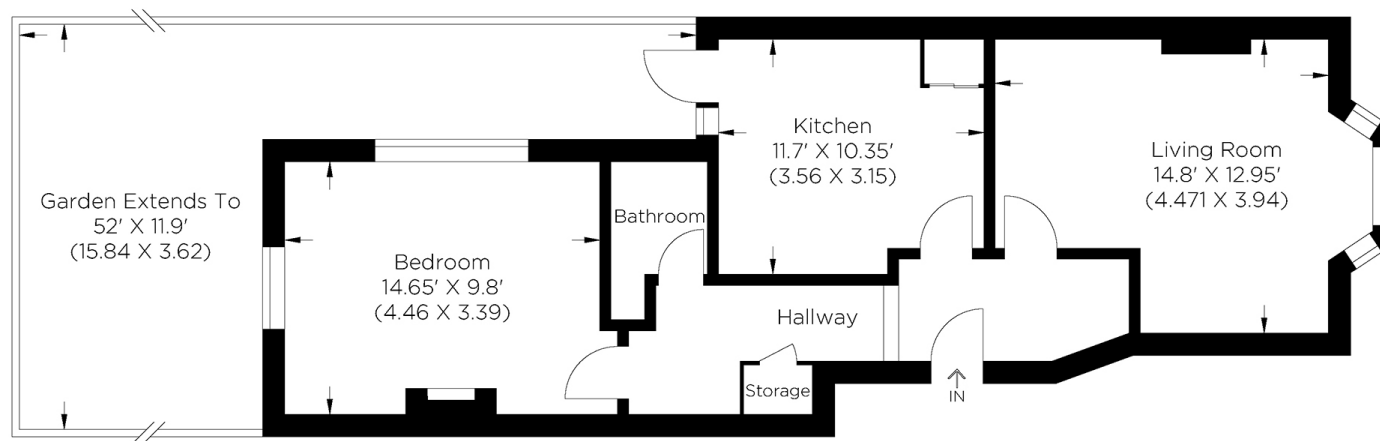
£475,000
SOLD



MATHAM GROVE SE22

This fully refurbished, one-bedroom conversion apartment in the sought-after Matham Grove, East Dulwich SE22, forms part of a stunning period house. Matham Grove is set within a vibrant area with excellent transport links and has Lordship Lane to enjoy refined dining with friends or grab a quick coffee on your way out. Internally, the apartment is immaculate and finished to an excellent standard, ideal for moving straight into. This spacious ground-floor apartment comprises a large open-plan lounge with a high-end kitchen, a generous main bedroom and a modern three-piece bathroom. The private garden provides a beautiful oasis and affords the perfect spot to relax and enjoy a good book in peace. Offered with no onward chain and priced to sell, we advise your earliest viewing.

Borough: Southwark* Council Tax: B* EPC: D Lease Term: 125 years* Service Charge: TBA Ground Rent: £150*
Nearest Station: East Dulwich (0.27 miles) Material Information: www.alexneil.com/material-information



Approximate gross internal area
55.67 SQ M / 599.22 SQ FT

Rotherhithe & Bermondsey Office
146 Lower Road, London SE16 2UG

t: 020 7237 6767 e: rotherhithe@alexneil.com

Disclaimer: Property descriptions are subjective and used in good faith as an opinion rather than statements of fact. The owner provided information relating to title, tenure, service charges and ground rent information. Therefore, please make specific enquiries to ensure that our descriptions match your expectations of the property. Floor plan measurements are approximate and for illustrative purposes only. Furthermore, we have not tested any services, systems or appliances at this property. And we strongly recommend that you verify all the provided information on inspection and that your surveyor and conveyancer further confirm details. Also, market conditions and property values regularly fluctuate. And showcased sold properties demonstrate our previous successes rather than indicate live property values. *As advised by the owner. **Property sold subject to contract.



ALEX NEIL

ESTATE AGENTS SINCE 1984

2024 signifies our **40th Anniversary**, and we are immensely proud to have reached this impressive longevity milestone. In celebration, we launched an **exceptional promotion** for sellers, affording them increased marketing exposure for free!

40 years of expertise: With four decades of experience, we bring a wealth of knowledge and expertise. Our durability is a testament to the trust satisfied clients place in us. We understand the nuances of the diverse neighbourhoods we cover. Our local expertise allows us to provide tailored solutions, whether you're buying or selling, allowing you to move with confidence.



ALEX NEIL

ESTATE AGENTS SINCE 1984

www.alexneil.com