



AURORA POINT SE16  
**3 bedroom apartment**

**£590,000**  
SOLD

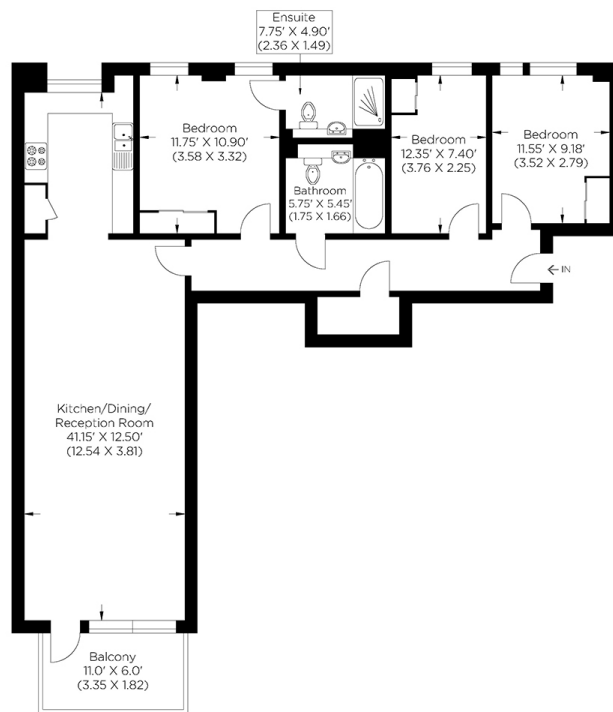




# AURORA POINT SE16

This superbly spacious and immaculately presented three-bedroom apartment is in the desirable Aurora Point, Plough Way, Surrey Quays SE16, which forms part of the highly anticipated Marine Wharf East Development. This property has been thoughtfully designed and boasts a large open-plan living room with a sleek fitted kitchen with top-grade appliances, three large bedrooms with en-suite to the master and a luxurious three-piece bathroom. The apartment boasts a large private balcony, allocated parking, daytime concierge service, communal gardens and a convenient gym in the block. Commuters enjoy excellent positioning for Canada Water and Surrey Quays stations and a regular bus route. The highly convenient location means catching up with friends for coffee or something more refined from one of the fine delicatessens and cosy eateries nearby is easy.

Borough: Lewisham\* Council Tax: C\* EPC: B Lease Term: 996 years\* Service Charge: £4,521\* Ground Rent: £550\*  
Nearest Station: Surrey Quays (0.54 miles) Material Information: [www.alexneil.com/material-information](http://www.alexneil.com/material-information)



Approximate gross internal area  
99.50 sq m / 1071.0 sq ft

**Rotherhithe & Bermondsey Office**  
**146 Lower Road, London SE16 2UG**

**t: 020 7237 6767 e: [rotherhithe@alexneil.com](mailto:rotherhithe@alexneil.com)**

Disclaimer: Property descriptions are subjective and used in good faith as an opinion rather than statements of fact. The owner provided information relating to title, tenure, service charges and ground rent information. Therefore, please make specific enquiries to ensure that our descriptions match your expectations of the property. Floor plan measurements are approximate and for illustrative purposes only. Furthermore, we have not tested any services, systems or appliances at this property. And we strongly recommend that you verify all the provided information on inspection and that your surveyor and conveyancer further confirm details. Also, market conditions and property values regularly fluctuate. And showcased sold properties demonstrate our previous successes rather than indicate live property values. \*As advised by the owner. \*\*Property sold subject to contract.



# ALEX NEIL

ESTATE AGENTS SINCE 1984