



SILWOOD STREET SE16  
**1 bedroom apartment**

**£335,000**  
SOLD

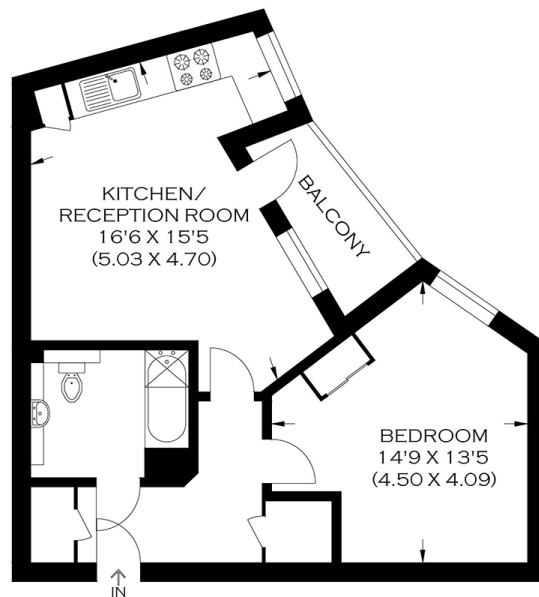




# SILWOOD STREET SE16

We present an immaculate one-bedroom apartment on desirable Silwood Street, South Bermondsey SE16. The property is part of the recently completed residential development. It comprises a large open-plan living room complete with a fitted kitchen and a cosy breakfast bar, a generous bedroom with a fitted wardrobe, a built-in desk, and a contemporary bathroom. A large private balcony provides a great space to dine al fresco and enjoy views over the inner courtyard. Other features include ample storage, double glazing and wooden flooring. Silwood Street is convenient for Canada Water and Surrey Quays stations offering excellent transport links. It is well positioned for a wealth of local amenities and the wonderful green space of Southwark Park.

Borough: Lewisham\* Council Tax: D\* EPC: B Lease Term: 117 years\* Service Charge: £1,934\* Ground Rent: £100\*  
Nearest Station: South Bermondsey (0.28 miles) Material Information: [www.alexneil.com/material-information](http://www.alexneil.com/material-information)



FIRST FLOOR

APPROXIMATE GROSS INTERNAL AREA

47.10 SQ M / 508.0 SQ FT

Produced By [www.myphotogenie.co.uk](http://www.myphotogenie.co.uk)

**Rotherhithe & Bermondsey Office**  
146 Lower Road, London SE16 2UG

t: 020 7237 6767 e: [rotherhithe@alexneil.com](mailto:rotherhithe@alexneil.com)

Disclaimer: Property descriptions are subjective and used in good faith as an opinion rather than statements of fact. The owner provided information relating to title, tenure, service charges and ground rent information. Therefore, please make specific enquiries to ensure that our descriptions match your expectations of the property. Floor plan measurements are approximate and for illustrative purposes only. Furthermore, we have not tested any services, systems or appliances at this property. And we strongly recommend that you verify all the provided information on inspection and that your surveyor and conveyancer further confirm details. Also, market conditions and property values regularly fluctuate. And showcased sold properties demonstrate our previous successes rather than indicate live property values. \*As advised by the owner. \*\*Property sold subject to contract.



# ALEX NEIL

ESTATE AGENTS SINCE 1984

2024 signifies our **40th Anniversary**, and we are immensely proud to have reached this impressive longevity milestone. In celebration, we launched an **exceptional promotion** for sellers, affording them increased marketing exposure for free!

**40 years of expertise:** With four decades of experience, we bring a wealth of knowledge and expertise. Our durability is a testament to the trust satisfied clients place in us. We understand the nuances of the diverse neighbourhoods we cover. Our local expertise allows us to provide tailored solutions, whether you're buying or selling, allowing you to move with confidence.



ALEX NEIL

ESTATE AGENTS SINCE 1984

[www.alexneil.com](http://www.alexneil.com)