



ST. DAVIDS SQUARE E14  
**1 bedroom apartment**

**£375,000**  
SOLD

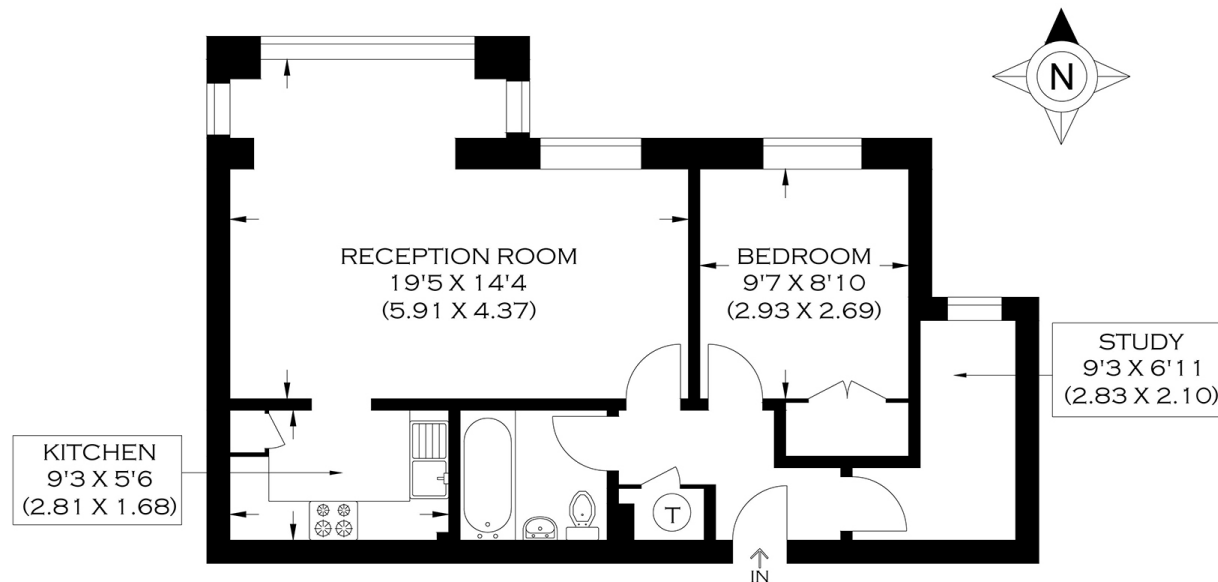




# ST. DAVIDS SQUARE E14

This beautiful one-bedroom apartment is in Lockes Wharf, a highly desirable riverside development on St Davids Square, Isle of Dogs E14. Lockes Wharf is a fantastic location convenient for the amenities of Manchester Road and has easy access to Island Gardens DLR station and the Greenwich Foot Tunnel. The apartment boasts an open-plan kitchen/reception room with floor-to-ceiling windows, a spacious double bedroom and a family bathroom. This flat also uniquely benefits from an extra room utilised as an office. It further features an allocated parking space. Lockes Wharf, St Davids Square, enjoys excellent facilities, concierge services, a superb swimming pool and a gymnasium. We thoroughly recommend Lockes Wharf St Davids Square and this apartment.

Borough: Tower Hamlets\* Council Tax: E\* EPC: D Lease Term: 976\* Service Charge: £3,458\* Ground Rent: £150\*



APPROXIMATE GROSS INTERNAL AREA  
51.0 SQ M / 549.0 SQ FT  
Produced By [www.myphotogenie.co.uk](http://www.myphotogenie.co.uk)



**Canary Wharf & Docklands Office**  
2 Westferry Road, Canary Wharf, London E14 8JT

t: 020 7537 9859 e: [canarywharf@alexneil.com](mailto:canarywharf@alexneil.com)

Disclaimer: Property descriptions are subjective and used in good faith as an opinion rather than statements of fact. The owner provided information relating to title, tenure, service charges and ground rent information. Therefore, please make specific enquiries to ensure that our descriptions match your expectations of the property. Floor plan measurements are approximate and for illustrative purposes only. Furthermore, we have not tested any services, systems or appliances at this property. And we strongly recommend that you verify all the provided information on inspection and that your surveyor and conveyancer further confirm details. Also, market conditions and property values regularly fluctuate. And showcased sold properties demonstrate our previous successes rather than indicate live property values. \*As advised by the owner. \*\*Property sold subject to contract.

## ALEX NEIL

ESTATE AGENTS SINCE 1984