



WEST LANE SE16  
**4 bedroom town house**

**£1,000,000**  
SOLD





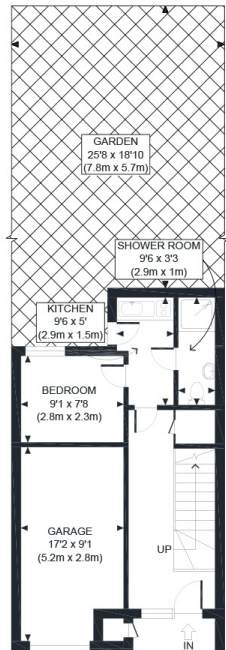
# WEST LANE SE16

Located in an enviable position in West Lane, Bermondsey SE16, literally a few steps from the banks of the Thames, this spacious four-bedroom family home offers exceptionally versatile three-floor accommodation. On the ground floor is a handy utility room, a contemporary shower room and a fourth bedroom that lends itself as an au pair or guest suite. On the first floor is a fantastic double-aspect reception room ideal for entertaining and a stylish recently upgraded high gloss kitchen. A luxurious bathroom with a bath and separate shower cubicle serves three top-floor bedrooms. Living on West Lane, you are fortunate enough to have the opportunity to wander along the river enjoying the scenery and views, then take refreshments at one of the lovely traditional pubs nearby, including The Angel and The Mayflower.

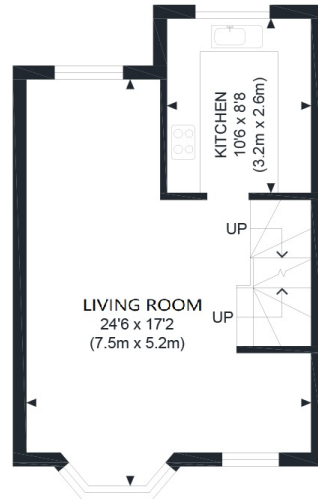
Borough: Southwark\* Council Tax: B\* EPC: C

Nearest Station: Bermondsey (0.18 miles) Material Information: [www.alexneil.com/material-information](http://www.alexneil.com/material-information)

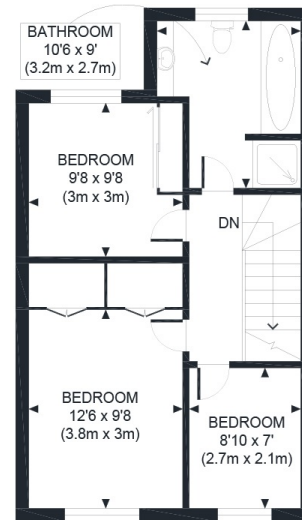
GROUND FLOOR  
GROSS INTERNAL  
FLOOR AREA WITH GARAGE AREA 448 SQ FT  
FLOOR AREA WITHOUT GARAGE AREA 289 SQ FT



FIRST FLOOR  
GROSS INTERNAL  
FLOOR AREA 428 SQ FT



SECOND FLOOR  
GROSS INTERNAL  
FLOOR AREA 482 SQ FT



APPROX. GROSS INTERNAL FLOOR AREA WITH GARAGE 1358 SQ FT / 126 SQM  
APPROX. GROSS INTERNAL FLOOR AREA WITHOUT GARAGE 1199 SQ FT / 111 SQM

**Rotherhithe & Bermondsey Office**  
146 Lower Road, London SE16 2UG

t: 020 7237 6767 e: [rotherhithe@alexneil.com](mailto:rotherhithe@alexneil.com)

Disclaimer: Property descriptions are subjective and used in good faith as an opinion rather than statements of fact. The owner provided information relating to title, tenure, service charges and ground rent information. Therefore, please make specific enquiries to ensure that our descriptions match your expectations of the property. Floor plan measurements are approximate and for illustrative purposes only. Furthermore, we have not tested any services, systems or appliances at this property. And we strongly recommend that you verify all the provided information on inspection and that your surveyor and conveyancer further confirm details. Also, market conditions and property values regularly fluctuate. And showcased sold properties demonstrate our previous successes rather than indicate live property values. \*As advised by the owner. \*\*Property sold subject to contract.



# ALEX NEIL

ESTATE AGENTS SINCE 1984

2024 signifies our **40th Anniversary**, and we are immensely proud to have reached this impressive longevity milestone. In celebration, we launched an **exceptional promotion** for sellers, affording them increased marketing exposure for free!

**40 years of expertise:** With four decades of experience, we bring a wealth of knowledge and expertise. Our durability is a testament to the trust satisfied clients place in us. We understand the nuances of the diverse neighbourhoods we cover. Our local expertise allows us to provide tailored solutions, whether you're buying or selling, allowing you to move with confidence.



ALEX NEIL

ESTATE AGENTS SINCE 1984

[www.alexneil.com](http://www.alexneil.com)