



LYDFORD HOUSE BR7
2 bedroom apartment

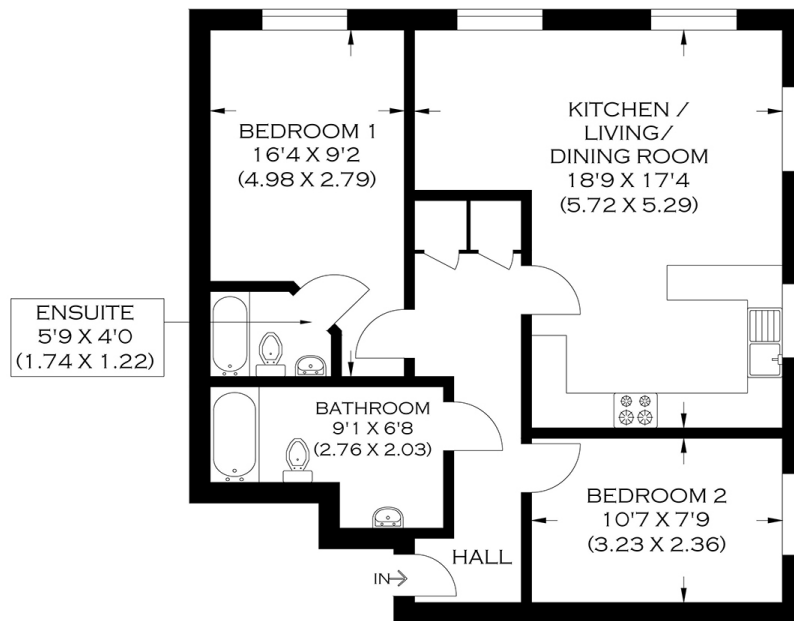
£350,000
SOLD



LYDFORD HOUSE BR7

This modern yet spacious first-floor apartment is in Lydford House, Ravens Dene, Chislehurst BR7, forming part of the highly esteemed King's Quarter development. Lydford House boasts a convenient location, with Elmstead Woods train station within easy reach and several local bus routes offering good connections to the surrounding areas. In addition, the vast selection of restaurants and eateries that Chislehurst High Street and Royal Parade provide make it easy to meet with friends for a quick coffee or some more refined dining. The array of independent retailers offers the chance to pick up some unique items. The stunning apartment's accommodation comprises an open plan reception/kitchen/diner, two bedrooms, and two bathrooms, of which one is an en-suite and allocated parking. The apartment boasts gas central heating, double glazing and ample inbuilt storage. Additionally, the property is offered chain-free.

Borough: Bromley* Council Tax: E* EPC: B Lease Term: 114* Service Charge: £1,400* Ground Rent: £250*



APPROXIMATE GROSS INTERNAL AREA
64.0 SQ M / 689.0 SQ FT

Produced By www.myphotogenie.co.uk

Rotherhithe & Bermondsey Office
146 Lower Road, London SE16 2UG

t: 020 7237 6767 e: rotherhithe@alexneil.com

Disclaimer: Property descriptions are subjective and used in good faith as an opinion rather than statements of fact. The owner provided information relating to title, tenure, service charges and ground rent information. Therefore, please make specific enquiries to ensure that our descriptions match your expectations of the property. Floor plan measurements are approximate and for illustrative purposes only. Furthermore, we have not tested any services, systems or appliances at this property. And we strongly recommend that you verify all the provided information on inspection and that your surveyor and conveyancer further confirm details. Also, market conditions and property values regularly fluctuate. And showcased sold properties demonstrate our previous successes rather than indicate live property values. *As advised by the owner. **Property sold subject to contract.



ALEX NEIL

ESTATE AGENTS SINCE 1984