



PENNINGTON COURT SE16
2 bedroom apartment

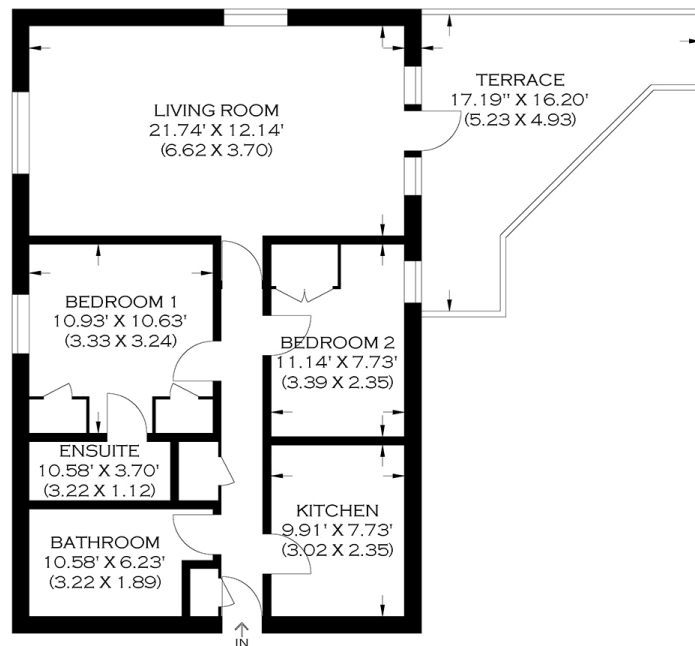
£500,000
SOLD



PENNINGTON COURT SE16

This impressive two-bedroom apartment is in Pennington Court, Rotherhithe Street, Rotherhithe SE16, a charming riverside location at Pageant Steps. The apartment has been carefully refurbished to a high standard and boasts a sleek and stylish finish. The accommodation comprises a dual-aspect bright living room, a separate kitchen with integrated appliances, two double bedrooms, one with en-suite and a family bathroom. Additionally, there is a secure allocated parking space. For those who love to entertain or read a book with a glass of wine and unwind outside, there is a large west-facing private terrace to enjoy. Pennington Court, Pageant Steps is an ideal location on the Rotherhithe peninsula, within easy reach of Rotherhithe, Canada Water and the River Bus. Rotherhithe offers a choice of pubs with walks along the river and nearby Russia Dock Woodland.

Borough: Southwark* Council Tax: E* EPC: C Lease Term: 100 years* Service Charge: £4,054* Ground Rent: £50*
Nearest Station: Rotherhithe (0.82 miles) Material Information: www.alexneil.com/material-information



APPROXIMATE GROSS INTERNAL AREA

68.91 SQ M / 741.74 SQ FT

Produced By www.myphotogenie.co.uk

Rotherhithe & Bermondsey Office
146 Lower Road, London SE16 2UG

t: 020 7237 6767 e: rotherhithe@alexneil.com

Disclaimer: Property descriptions are subjective and used in good faith as an opinion rather than statements of fact. The owner provided information relating to title, tenure, service charges and ground rent information. Therefore, please make specific enquiries to ensure that our descriptions match your expectations of the property. Floor plan measurements are approximate and for illustrative purposes only. Furthermore, we have not tested any services, systems or appliances at this property. And we strongly recommend that you verify all the provided information on inspection and that your surveyor and conveyancer further confirm details. Also, market conditions and property values regularly fluctuate. And showcased sold properties demonstrate our previous successes rather than indicate live property values. *As advised by the owner. **Property sold subject to contract.



ALEX NEIL

ESTATE AGENTS SINCE 1984

2024 signifies our **40th Anniversary**, and we are immensely proud to have reached this impressive longevity milestone. In celebration, we launched an **exceptional promotion** for sellers, affording them increased marketing exposure for free!

40 years of expertise: With four decades of experience, we bring a wealth of knowledge and expertise. Our durability is a testament to the trust satisfied clients place in us. We understand the nuances of the diverse neighbourhoods we cover. Our local expertise allows us to provide tailored solutions, whether you're buying or selling, allowing you to move with confidence.



ALEX NEIL

ESTATE AGENTS SINCE 1984

www.alexneil.com