



MELLISH STREET E14
4 bedroom terraced house

£700,000
SOLD



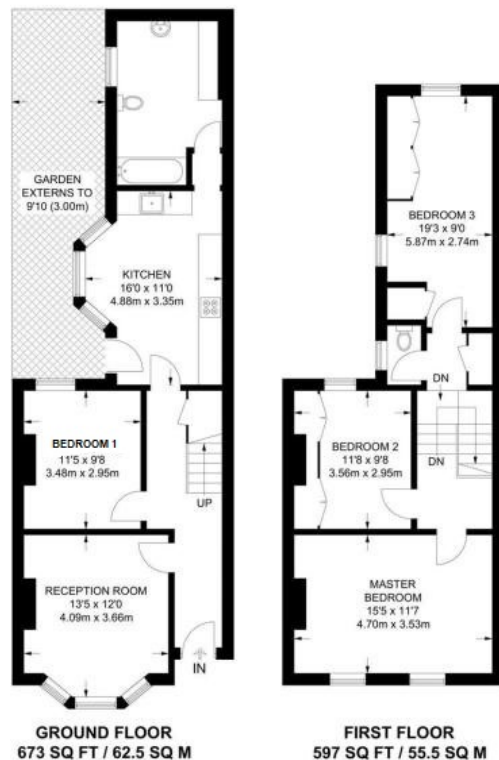
MELLISH STREET E14

This beautiful four-bedroom Victorian house is in the wonderful Mellish Street, an idyllic location in the heart of the Isle of Dogs E14. Mellish Street enjoys easy access to many local amenities, transport links, and the superb shops and trendy eateries that Canary Wharf affords. Internally, the high ceilings and large windows provide abundant natural light, enhancing the warm and inviting feeling. This home comprises a generous reception room with a beautiful bay window and a separate kitchen with space to dine, four double bedrooms, a good sized family bathroom with a separate WC to the first floor and a low maintenance private rear garden providing a glorious oasis to unwind. Mellish Street is in the catchment of several highly regarded schools, and this wonderful home requires your immediate inspection.

Borough: Tower Hamlets* Council Tax: D* EPC: E

Nearest Station: Crossharbour (0.26 miles) Material Information: www.alexneil.com/material-information

APPROXIMATE FLOOR AREA = 1270 SQ FT / 118 SQ M



Canary Wharf & Docklands Office
2 Westferry Road, Canary Wharf, London E14 8JT

t: 020 7537 9859 e: canarywharf@alexneil.com

Disclaimer: Property descriptions are subjective and used in good faith as an opinion rather than statements of fact. The owner provided information relating to title, tenure, service charges and ground rent information. Therefore, please make specific enquiries to ensure that our descriptions match your expectations of the property. Floor plan measurements are approximate and for illustrative purposes only. Furthermore, we have not tested any services, systems or appliances at this property. And we strongly recommend that you verify all the provided information on inspection and that your surveyor and conveyancer further confirm details. Also, market conditions and property values regularly fluctuate. And showcased sold properties demonstrate our previous successes rather than indicate live property values. *As advised by the owner. **Property sold subject to contract.



ALEX NEIL

ESTATE AGENTS SINCE 1984

2024 signifies our **40th Anniversary**, and we are immensely proud to have reached this impressive longevity milestone. In celebration, we launched an **exceptional promotion** for sellers, affording them increased marketing exposure for free!

40 years of expertise: With four decades of experience, we bring a wealth of knowledge and expertise. Our durability is a testament to the trust satisfied clients place in us. We understand the nuances of the diverse neighbourhoods we cover. Our local expertise allows us to provide tailored solutions, whether you're buying or selling, allowing you to move with confidence.



ALEX NEIL

ESTATE AGENTS SINCE 1984

www.alexneil.com