



KESTON PARK CLOSE BR2
5 bedroom detached house

£1,100,000
SOLD

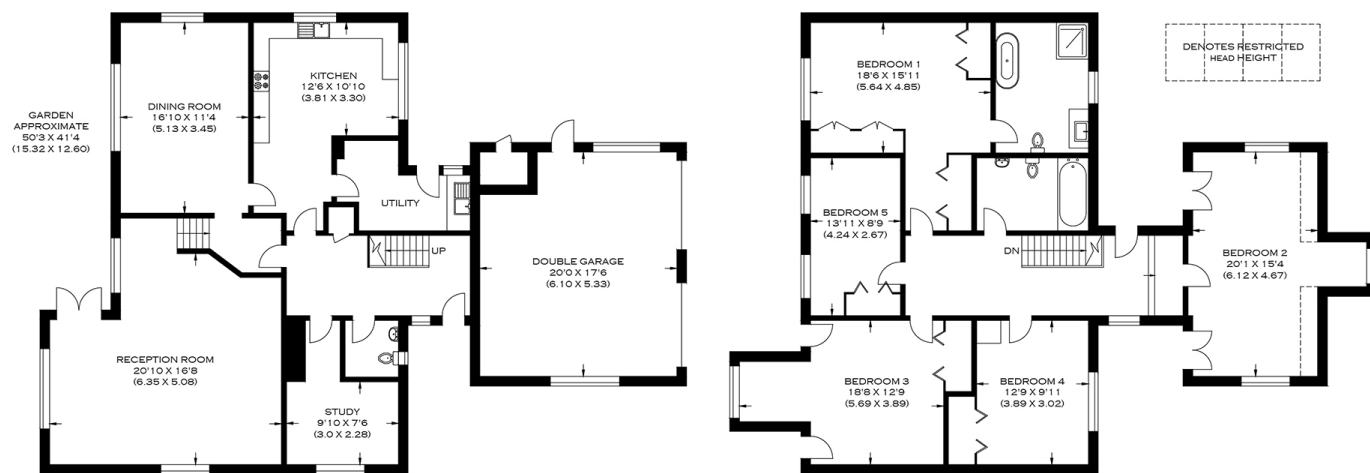


KESTON PARK CLOSE BR2

This impressive five-bedroom detached house boasts a cul-de-sac location in the highly esteemed Keston Park Close, Bromley BR2. The expansive accommodation is well presented and enjoys a natural flow through the house. The considerable choice of shops and amenities in Bromley High Street is within easy reach. A varied selection of cuisine in nearby Locksbottom complements retail therapy and makes meeting with friends a new experience each time. The beautiful Keston Ponds make for an excellent day out with the kids. Keston Park is in the catchment of several highly regarded schools, and this home would be perfect for families. Local buses serve Keston, Orpington and Hayes train stations and offer frequent services to Central London. We recommend you book an early viewing appointment.

Borough: Bromley* Council Tax: G* EPC: C

Nearest Station: Hayes (1.68 miles) Material Information: www.alexneil.com/material-information



GROUND FLOOR

FIRST FLOOR

APPROXIMATE GROSS INTERNAL AREA

258.0 SQ M / 2775.0 SQ FT

Produced By www.myphotogenie.co.uk



Rotherhithe & Bermondsey Office
146 Lower Road, London SE16 2UG

t: 020 7237 6767 e: rotherhithe@alexneil.com

Disclaimer: Property descriptions are subjective and used in good faith as an opinion rather than statements of fact. The owner provided information relating to title, tenure, service charges and ground rent information. Therefore, please make specific enquiries to ensure that our descriptions match your expectations of the property. Floor plan measurements are approximate and for illustrative purposes only. Furthermore, we have not tested any services, systems or appliances at this property. And we strongly recommend that you verify all the provided information on inspection and that your surveyor and conveyancer further confirm details. Also, market conditions and property values regularly fluctuate. And showcased sold properties demonstrate our previous successes rather than indicate live property values. *As advised by the owner. **Property sold subject to contract.

ALEX NEIL

ESTATE AGENTS SINCE 1984

2024 signifies our **40th Anniversary**, and we are immensely proud to have reached this impressive longevity milestone. In celebration, we launched an **exceptional promotion** for sellers, affording them increased marketing exposure for free!

40 years of expertise: With four decades of experience, we bring a wealth of knowledge and expertise. Our durability is a testament to the trust satisfied clients place in us. We understand the nuances of the diverse neighbourhoods we cover. Our local expertise allows us to provide tailored solutions, whether you're buying or selling, allowing you to move with confidence.



ALEX NEIL

ESTATE AGENTS SINCE 1984

www.alexneil.com