



GLOBE WHARF SE16
2 bedroom apartment

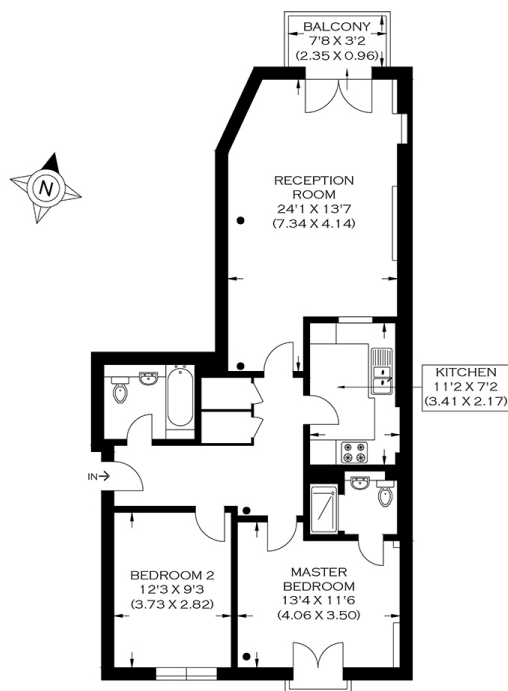
£675,000
SOLD



GLOBE WHARF SE16

This two spectacular two-bedroom warehouse conversion apartment is in the historic and prestigious Globe Wharf on Rotherhithe Street SE16. Globe Wharf is directly on the river and bursts with character and charm, and it is arguably the most sought-after development in Rotherhithe. The property has excellent presentation throughout and boasts a spacious reception room with access to a private balcony offering stunning river views. There is a modern fitted kitchen with integrated appliances, two double bedrooms with en-suite to the main and a modern family bathroom. The property features exposed brickwork, high ceilings and benefits from allocated parking. Globe Wharf offers an attentive concierge service and leisure facilities for residents. Excellent transport links allow easy commutes to Canary Wharf and The City from nearby Rotherhithe Station, Canada Water and Nelson Dock Pier.

Borough: Southwark* Council Tax: F* EPC: C Lease Term: 104 years* Service Charge: £5,000* Ground Rent: £150*
Nearest Station: Rotherhithe (0.58 miles) Material Information: www.alexneil.com/material-information



APPROXIMATE GROSS INTERNAL AREA
78.47 SQ M / 844.64 SQ FT

Produced By www.myphotogenie.co.uk

Rotherhithe & Bermondsey Office
146 Lower Road, London SE16 2UG

t: 020 7237 6767 e: rotherhithe@alexneil.com

Disclaimer: Property descriptions are subjective and used in good faith as an opinion rather than statements of fact. The owner provided information relating to title, tenure, service charges and ground rent information. Therefore, please make specific enquiries to ensure that our descriptions match your expectations of the property. Floor plan measurements are approximate and for illustrative purposes only. Furthermore, we have not tested any services, systems or appliances at this property. And we strongly recommend that you verify all the provided information on inspection and that your surveyor and conveyancer further confirm details. Also, market conditions and property values regularly fluctuate. And showcased sold properties demonstrate our previous successes rather than indicate live property values. *As advised by the owner. **Property sold subject to contract.



ALEX NEIL

ESTATE AGENTS SINCE 1984

2024 signifies our **40th Anniversary**, and we are immensely proud to have reached this impressive longevity milestone. In celebration, we launched an **exceptional promotion** for sellers, affording them increased marketing exposure for free!

40 years of expertise: With four decades of experience, we bring a wealth of knowledge and expertise. Our durability is a testament to the trust satisfied clients place in us. We understand the nuances of the diverse neighbourhoods we cover. Our local expertise allows us to provide tailored solutions, whether you're buying or selling, allowing you to move with confidence.



ALEX NEIL

ESTATE AGENTS SINCE 1984

www.alexneil.com