



SHEPPARD DRIVE SE16
2 bedroom apartment

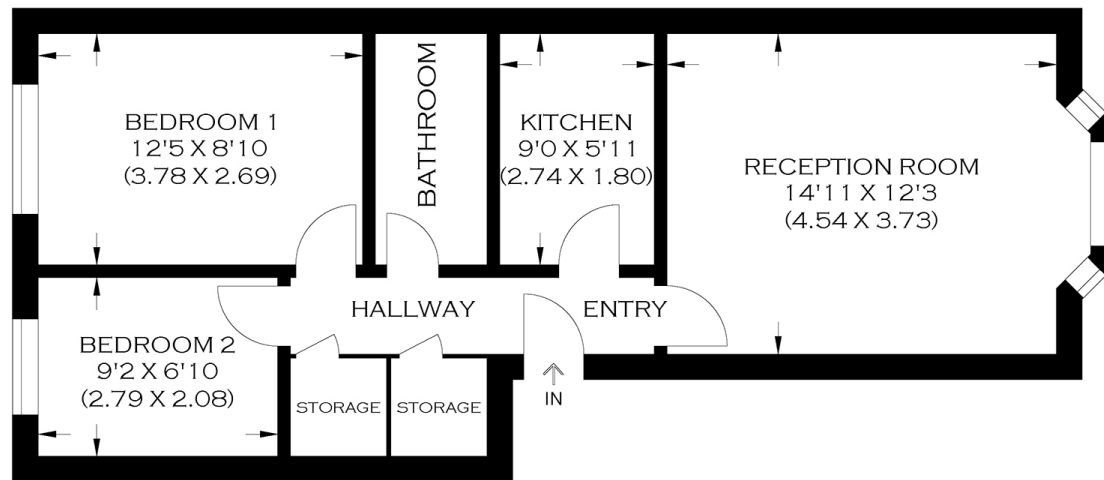
£325,000
SOLD



SHEPPARD DRIVE SE16

We present for sale this wonderful, light and spacious apartment situated on the popular Sheppard Drive, South Bermondsey SE16. The accommodation comprises a large reception room, a semi-open-plan kitchen, two good-sized bedrooms and a three-piece bathroom suite. Features include secure entry. This peaceful cul-de-sac location is distant from the hustle and bustle yet offers the convenience of excellent amenities. The transport links are superb, whether you drive, cycle or use public transport. Access to the City and Canary Wharf is straightforward, with an allocated parking space and South Bermondsey train station within easy reach. There is also a frequent 24-hour bus service from Old Kent Road nearby. Surrey Quays retail hub affords the perfect place for some retail therapy or the convenience of picking up items on your way home. Sure to attract much interest, your earliest viewing is highly recommended.

Borough: Southwark* Council Tax: C* EPC: TBA Lease Term: 99* Service Charge: £1,500* Ground Rent: £100*



APPROXIMATE GROSS INTERNAL AREA

51.22 SQ M / 551.32 SQ FT

Produced By www.myphotogenie.co.uk

Rotherhithe & Bermondsey Office

146 Lower Road, London SE16 2UG

t: 020 7237 6767 e: rotherhithe@alexneil.com

Disclaimer: Property descriptions are subjective and used in good faith as an opinion rather than statements of fact. The owner provided information relating to title, tenure, service charges and ground rent information. Therefore, please make specific enquiries to ensure that our descriptions match your expectations of the property. Floor plan measurements are approximate and for illustrative purposes only. Furthermore, we have not tested any services, systems or appliances at this property. And we strongly recommend that you verify all the provided information on inspection and that your surveyor and conveyancer further confirm details. Also, market conditions and property values regularly fluctuate. And showcased sold properties demonstrate our previous successes rather than indicate live property values. *As advised by the owner. **Property sold subject to contract.



ALEX NEIL

ESTATE AGENTS SINCE 1984