



BERGER COURT E3  
**2 bedroom apartment**

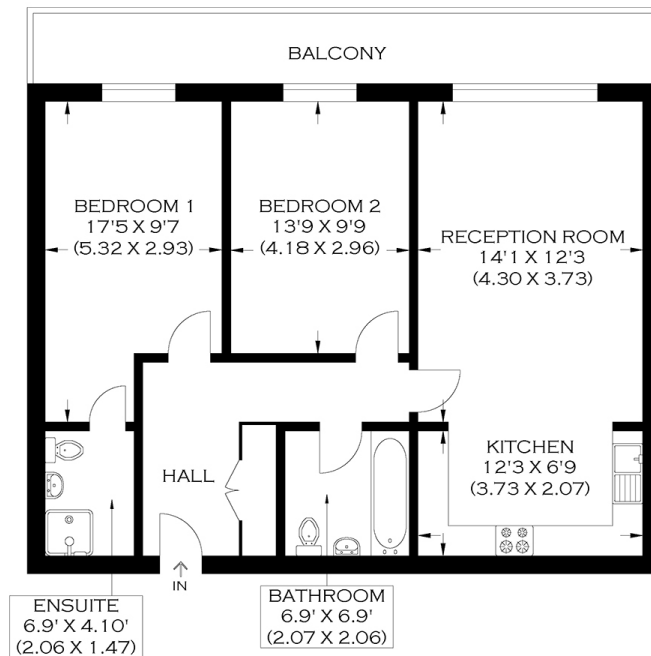
**£463,000**  
SOLD



# BERGER COURT E3

This spectacular two-bedroom apartment is in Berger Court, Bolinder Way, Bow E3, within the vibrant riverside community of Bow River Village. The apartment offers a high-specification interior and exudes luxury to exacting standards. The apartment is on the third floor and boasts a generous open-plan reception/modern kitchen with fully integrated appliances, two double bedrooms, an ensuite and a further bathroom. There is ample storage and a large private balcony. The increasingly trendy Canary Wharf and Stratford areas are highly accessible, as are The City and West End. Bromley by Bow underground station is within easy reach. The River Lea is the perfect backdrop for keen walkers or cyclists looking for a scenic setting and fresh air. We recommend your earliest inspection.

Borough: Tower Hamlets\* Council Tax: D\* EPC: B Lease Term: 121\* Service Charge: £2,640\* Ground Rent: £200\*



APPROXIMATE GROSS INTERNAL AREA  
73.0 SQ M / 786.0 SQ FT

Produced By [www.myphotogenie.co.uk](http://www.myphotogenie.co.uk)

**Canary Wharf & Docklands Office**  
2 Westferry Road, Canary Wharf, London E14 8JT

t: 020 7537 9859 e: [canarywharf@alexneil.com](mailto:canarywharf@alexneil.com)

Disclaimer: Property descriptions are subjective and used in good faith as an opinion rather than statements of fact. The owner provided information relating to title, tenure, service charges and ground rent information. Therefore, please make specific enquiries to ensure that our descriptions match your expectations of the property. Floor plan measurements are approximate and for illustrative purposes only. Furthermore, we have not tested any services, systems or appliances at this property. And we strongly recommend that you verify all the provided information on inspection and that your surveyor and conveyancer further confirm details. Also, market conditions and property values regularly fluctuate. And showcased sold properties demonstrate our previous successes rather than indicate live property values. \*As advised by the owner. \*\*Property sold subject to contract.



## ALEX NEIL

ESTATE AGENTS SINCE 1984