



COPENHAGEN COURT SE8
1 bedroom apartment

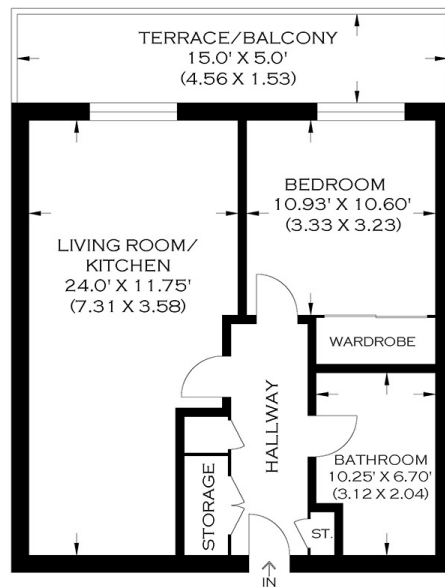
£395,000
SOLD



COPENHAGEN COURT SE8

We present this modern and impressively sized one-bedroom apartment in Copenhagen Court, Yeoman Street, Deptford SE8. This prestigious property is part of the desirable Greenland Place development and is convenient for excellent transport links via Surrey Quays Station. Copenhagen Court offers convenience and easy access to various local amenities, including Surrey Quays shopping centre, cinema and many eateries. The accommodation comprises a large open-plan lounge with a stylish fitted kitchen, a double bedroom and a contemporary bathroom. The apartment boasts a private balcony and excellent facilities, including concierge services and leisure facilities. The wonderful green spaces of Deptford Park and Southwark Park provide a beautiful backdrop to enjoy some exercise or a picnic with friends.

Borough: Lewisham* Council Tax: B* EPC: B Lease Term: 991* Service Charge: £2,022* Ground Rent: £300*



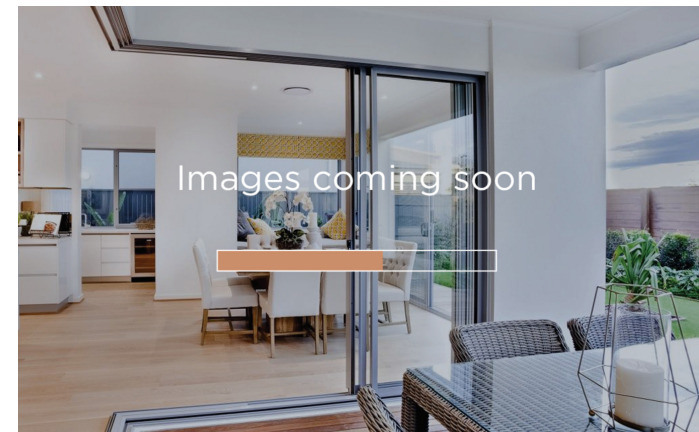
APPROXIMATE GROSS INTERNAL AREA
51.78 SQ M / 557.35 SQ FT

PRODUCED BY WWW.MYPHOTOGENIE.CO.UK

Rotherhithe & Bermondsey Office
146 Lower Road, London SE16 2UG

t: 020 7237 6767 e: rotherhithe@alexneil.com

Disclaimer: Property descriptions are subjective and used in good faith as an opinion rather than statements of fact. The owner provided information relating to title, tenure, service charges and ground rent information. Therefore, please make specific enquiries to ensure that our descriptions match your expectations of the property. Floor plan measurements are approximate and for illustrative purposes only. Furthermore, we have not tested any services, systems or appliances at this property. And we strongly recommend that you verify all the provided information on inspection and that your surveyor and conveyancer further confirm details. Also, market conditions and property values regularly fluctuate. And showcased sold properties demonstrate our previous successes rather than indicate live property values. *As advised by the owner. **Property sold subject to contract.



ALEX NEIL

ESTATE AGENTS SINCE 1984