



VICTORIA WHARF E14
2 bedroom apartment

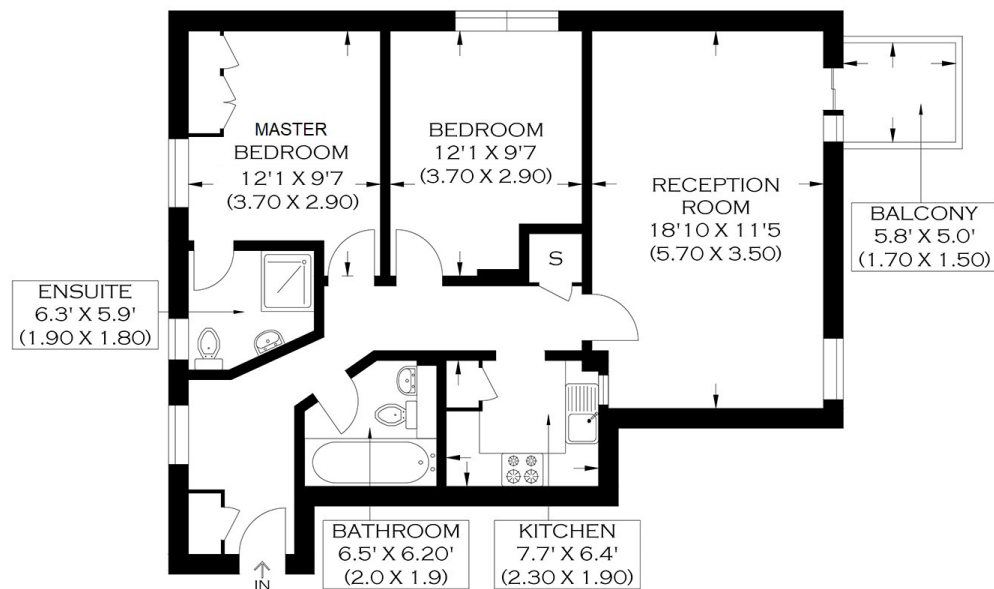
£550,000
SOLD



VICTORIA WHARF E14

Located along the historic and highly desirable Narrow Street, this impressive two-bedroom apartment in Victoria Wharf, Limehouse E14, offers luxurious living in a prime position. The apartment is well presented throughout and features a large living room with a private balcony and beautiful river views, a separate fitted kitchen, a spacious main bedroom with an en-suite, a second bedroom and a family bathroom. The apartment further benefits from secure gated parking and a concierge service. Limehouse Station provides excellent transport links, making the commute more accessible and allowing easy access to Canary Wharf and its array of trendy shops and bars. Also, the selection of riverside bars and restaurants on offer nearby will create the perfect excuse not to cook and meet up with friends.

Borough: Tower Hamlets* Council Tax: F* EPC: C Lease Term: 977 years* Service Charge: £3,800* Ground Rent: £150*
Nearest Station: Limehouse (0.25 miles) Material Information: www.alexneil.com/material-information



SECOND FLOOR
APPROXIMATE GROSS INTERNAL AREA
64.0 SQ M / 685.0 SQ FT

Produced By www.myphotoenie.co.uk

Canary Wharf & Docklands Office
2 Westferry Road, Canary Wharf, London E14 8JT

t: 020 7537 9859 e: canarywharf@alexneil.com

Disclaimer: Property descriptions are subjective and used in good faith as an opinion rather than statements of fact. The owner provided information relating to title, tenure, service charges and ground rent information. Therefore, please make specific enquiries to ensure that our descriptions match your expectations of the property. Floor plan measurements are approximate and for illustrative purposes only. Furthermore, we have not tested any services, systems or appliances at this property. And we strongly recommend that you verify all the provided information on inspection and that your surveyor and conveyancer further confirm details. Also, market conditions and property values regularly fluctuate. And showcased sold properties demonstrate our previous successes rather than indicate live property values. *As advised by the owner. **Property sold subject to contract.



ALEX NEIL

ESTATE AGENTS SINCE 1984

2024 signifies our **40th Anniversary**, and we are immensely proud to have reached this impressive longevity milestone. In celebration, we launched an **exceptional promotion** for sellers, affording them increased marketing exposure for free!

40 years of expertise: With four decades of experience, we bring a wealth of knowledge and expertise. Our durability is a testament to the trust satisfied clients place in us. We understand the nuances of the diverse neighbourhoods we cover. Our local expertise allows us to provide tailored solutions, whether you're buying or selling, allowing you to move with confidence.



ALEX NEIL

ESTATE AGENTS SINCE 1984

www.alexneil.com