



SELSDON WAY E14
2 bedroom apartment

£700,000
SOLD

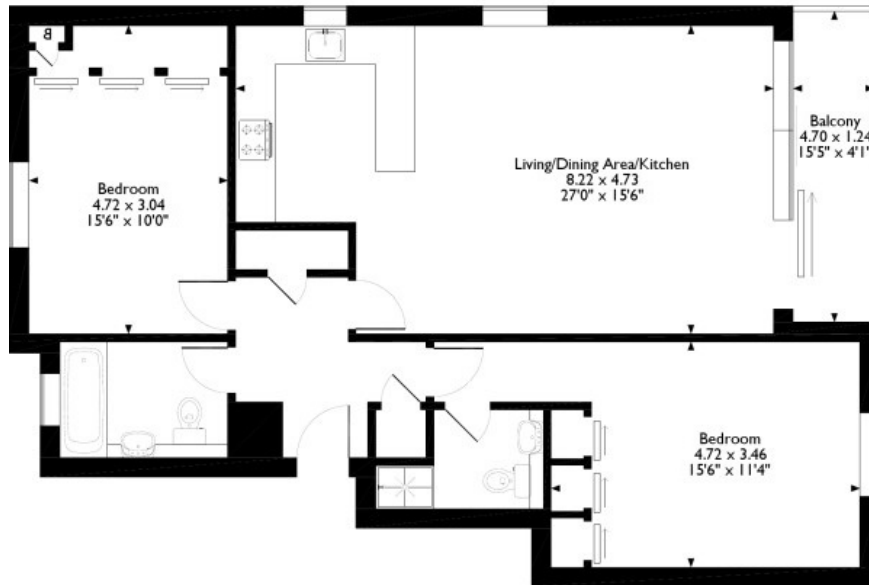


SELSDON WAY E14

This beautiful two-bedroom, two-bathroom apartment is in Selsdon Way, Isle of Dogs E14, within the popular City Harbour development. The apartment has been carefully and thoughtfully designed and is immaculate throughout. The sizeable contemporary open-plan kitchen/reception room enjoys the picturesque vista of the dock via the expansive floor-to-ceiling windows and the spacious balcony. There is a generous size main bedroom with an en-suite, a spacious guest bedroom and a family bathroom. City Harbour has secure underground parking and concierge services. Selsdon Way is ideal with many shops, bars, restaurants, and historic Greenwich via Crossharbour DLR or under the famous foot tunnel. We recommend your earliest viewing.

Borough: Tower Hamlets* Council Tax: F* EPC: C Lease Term: 103* Service Charge: £4,000* Ground Rent: £150*

Selsdon Way, London
Approximate Gross Internal Area
936 sqft/87 sqm



Canary Wharf & Docklands Office
2 Westferry Road, Canary Wharf, London E14 8JT

t: 020 7537 9859 e: canarywharf@alexneil.com

Disclaimer: Property descriptions are subjective and used in good faith as an opinion rather than statements of fact. The owner provided information relating to title, tenure, service charges and ground rent information. Therefore, please make specific enquiries to ensure that our descriptions match your expectations of the property. Floor plan measurements are approximate and for illustrative purposes only. Furthermore, we have not tested any services, systems or appliances at this property. And we strongly recommend that you verify all the provided information on inspection and that your surveyor and conveyancer further confirm details. Also, market conditions and property values regularly fluctuate. And showcased sold properties demonstrate our previous successes rather than indicate live property values. *As advised by the owner. **Property sold subject to contract.

ALEX NEIL

ESTATE AGENTS SINCE 1984