



OSCAR COURT SE16
2 bedroom apartment

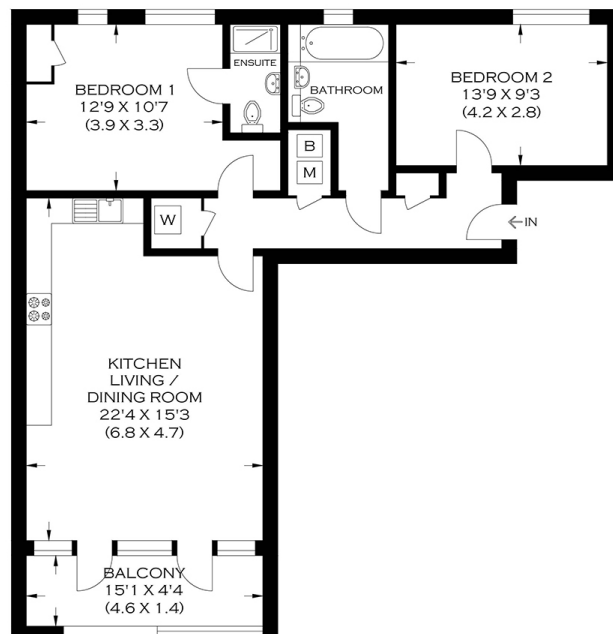
£535,000
SOLD



OSCAR COURT SE16

In an enviable location in Oscar Court, Rotherhithe Street, Rotherhithe SE16, this spacious apartment comprises a reception room with an open-plan well-equipped kitchen, two large double bedrooms and a family bathroom. It further benefits from allocated secure parking, built-in storage and a large private balcony with great views. Oscar Court is within easy reach of Canada Water Station and the surrounding amenities. The beautiful green space of Russia Dock Woodland is nearby, offering a relaxing setting to enjoy far away from the hustle and bustle yet very convenient for Canary Wharf, Central London and The City.

Borough: Southwark* Council Tax: E* EPC: TBA Lease Term: 116 years* Service Charge: £1,677* Ground Rent: £300*
Nearest Station: Canada Water (0.63 miles) Material Information: www.alexneil.com/material-information



APPROXIMATE GROSS INTERNAL AREA
75.19 SQ M / 809.33 SQ FT

Produced By www.myphotogenie.co.uk

Rotherhithe & Bermondsey Office
146 Lower Road, London SE16 2UG

t: 020 7237 6767 e: rotherhithe@alexneil.com

Disclaimer: Property descriptions are subjective and used in good faith as an opinion rather than statements of fact. The owner provided information relating to title, tenure, service charges and ground rent information. Therefore, please make specific enquiries to ensure that our descriptions match your expectations of the property. Floor plan measurements are approximate and for illustrative purposes only. Furthermore, we have not tested any services, systems or appliances at this property. And we strongly recommend that you verify all the provided information on inspection and that your surveyor and conveyancer further confirm details. Also, market conditions and property values regularly fluctuate. And showcased sold properties demonstrate our previous successes rather than indicate live property values. *As advised by the owner. **Property sold subject to contract.



ALEX NEIL

ESTATE AGENTS SINCE 1984