



LANDING WAITERS HOUSE E14
2 bedroom apartment

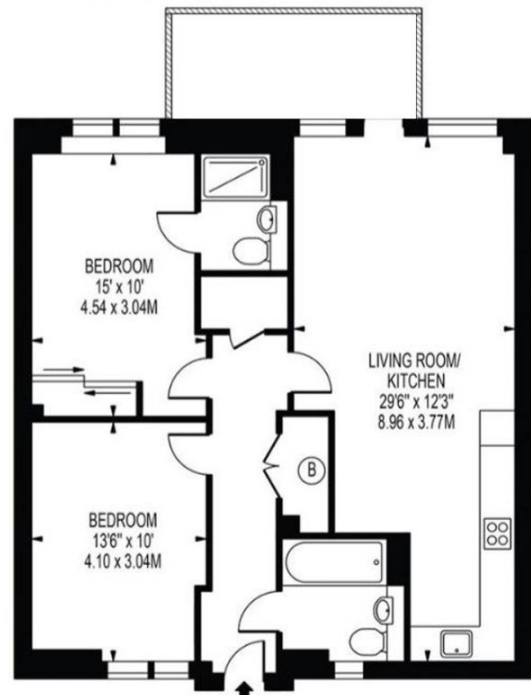
£475,000
SOLD



LANDING WAITERS HOUSE E14

We present a stunning two-bedroom, two-bathroom apartment in Landing Waiters House, Aberfeldy Village, Poplar E14. This fantastic property is on the top floor, offering a spacious open-plan reception/kitchen with integrated appliances, two double bedrooms, two bathrooms, and an en-suite. New Village Avenue is part of a recently completed residential development with an on-site concierge, a gym and a landscaped plaza. Landing Waiters House is near East India Dock DLR and Canning Town Jubilee Line stations. Nearby, many local bus routes, including 24-hour services, provide easy access to Canary Wharf, the City and central London.

Borough: Tower Hamlets* Council Tax: D* EPC: B Lease Term: 145* Service Charge: £2,800* Ground Rent: £350*



APPROXIMATE GROSS INTERNAL FLOOR AREA: 789 SQ FT - 73.27 SQ M

Canary Wharf & Docklands Office
2 Westferry Road, Canary Wharf, London E14 8JT

t: 020 7537 9859 e: canarywharf@alexneil.com

Disclaimer: Property descriptions are subjective and used in good faith as an opinion rather than statements of fact. The owner provided information relating to title, tenure, service charges and ground rent information. Therefore, please make specific enquiries to ensure that our descriptions match your expectations of the property. Floor plan measurements are approximate and for illustrative purposes only. Furthermore, we have not tested any services, systems or appliances at this property. And we strongly recommend that you verify all the provided information on inspection and that your surveyor and conveyancer further confirm details. Also, market conditions and property values regularly fluctuate. And showcased sold properties demonstrate our previous successes rather than indicate live property values. *As advised by the owner. **Property sold subject to contract.



ALEX NEIL

ESTATE AGENTS SINCE 1984