



KING FREDERICK NINTH TOWER SE16
2 bedroom apartment

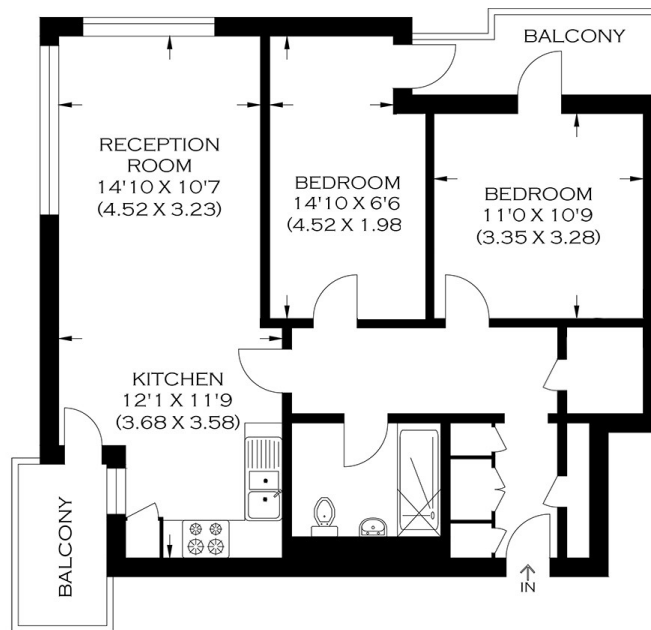
£630,000
SOLD



KING FREDERICK NINTH TOWER SE16

We present a stunning two-bedroom riverside apartment in the highly sought-after King Frederick Ninth Tower, Surrey Quays SE16. The space and quality are immediately apparent when you enter the welcoming hallway, which leads to a large open-plan reception room with dual-aspect windows flooding the room with natural light and a high-end fitted kitchen that opens to a private balcony. The two generous double bedrooms with inter-joining balconies, modern family bathroom and separate WC complete this remarkable apartment. Additional benefits include a video entry system, underground parking, ample storage and panoramic City skyline views. Excellent travel connections are within easy reach from Canada Water Jubilee Line and Surrey Quays Station. The Thames Clipper River Bus Service is near King Frederick Ninth Tower.

Borough: Southwark* Council Tax: D* EPC: C Lease Term: 91* Service Charge: £3,000* Ground Rent: £338*



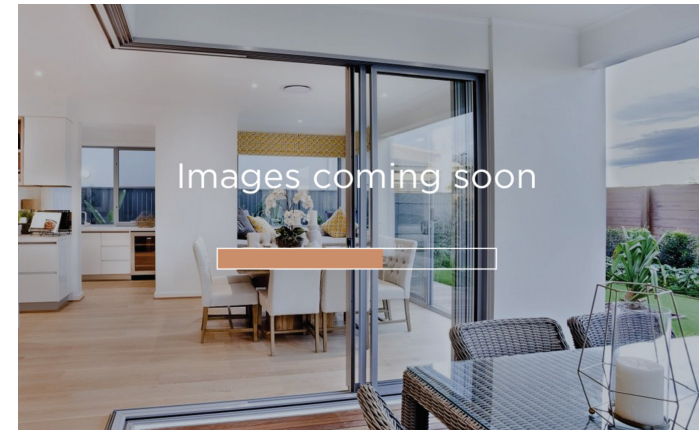
APPROXIMATE GROSS INTERNAL AREA
69.29 SQ M / 745.83 SQ FT

Produced By www.myphotogenie.co.uk

Rotherhithe & Bermondsey Office
146 Lower Road, London SE16 2UG

t: 020 7237 6767 e: rotherhithe@alexneil.com

Disclaimer: Property descriptions are subjective and used in good faith as an opinion rather than statements of fact. The owner provided information relating to title, tenure, service charges and ground rent information. Therefore, please make specific enquiries to ensure that our descriptions match your expectations of the property. Floor plan measurements are approximate and for illustrative purposes only. Furthermore, we have not tested any services, systems or appliances at this property. And we strongly recommend that you verify all the provided information on inspection and that your surveyor and conveyancer further confirm details. Also, market conditions and property values regularly fluctuate. And showcased sold properties demonstrate our previous successes rather than indicate live property values. *As advised by the owner. **Property sold subject to contract.



ALEX NEIL

ESTATE AGENTS SINCE 1984