



FRANCIS CLOSE E14
2 bedroom end of terrace

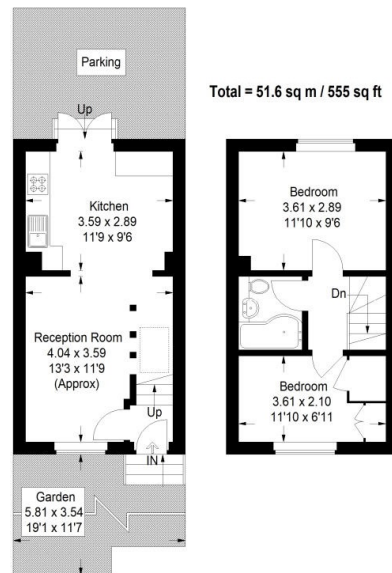
£440,000
SOLD



FRANCIS CLOSE E14

We present a superb two double-bedroom house in Francis Close, Compass Point, Isle of Dogs E14, a peaceful cul-de-sac with allocated parking. Compass Point is a quiet, privately owned residential development within easy reach of Canary Wharf. This freehold property comprises a spacious lounge, modern kitchen, family bathroom and two generously sized bedrooms. The house has a garden area and access to parking areas in Compass Point. Francis Close is close to many local shops, bars and restaurants. Nearby Island Gardens DLR provides excellent access routes to Canary Wharf and the City. We highly recommend this property.

Borough: Tower Hamlets* Council Tax: D* EPC: D



Canary Wharf & Docklands Office
2 Westferry Road, Canary Wharf, London E14 8JT

t: 020 7537 9859 e: canarywharf@alexneil.com

Disclaimer: Property descriptions are subjective and used in good faith as an opinion rather than statements of fact. The owner provided information relating to title, tenure, service charges and ground rent information. Therefore, please make specific enquiries to ensure that our descriptions match your expectations of the property. Floor plan measurements are approximate and for illustrative purposes only. Furthermore, we have not tested any services, systems or appliances at this property. And we strongly recommend that you verify all the provided information on inspection and that your surveyor and conveyancer further confirm details. Also, market conditions and property values regularly fluctuate. And showcased sold properties demonstrate our previous successes rather than indicate live property values. *As advised by the owner. **Property sold subject to contract.

ALEX NEIL

ESTATE AGENTS SINCE 1984