



LURALDA WHARF E14
2 bedroom apartment

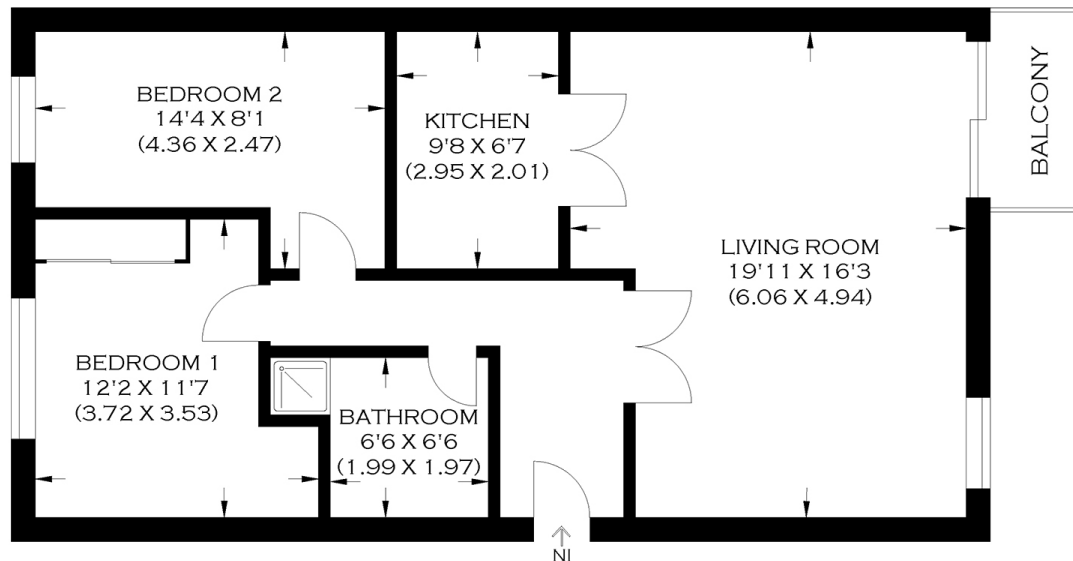
£400,000
SOLD



LURALDA WHARF E14

We present a river view two-bedroom apartment in Luralda Wharf, Saunders Ness Road, Isle of Dogs E14. The accommodation comprises an airy lounge/dining room and a semi-open plan kitchen. There are two double bedrooms, a three-piece bathroom, abundant storage and a garage. The apartment's stunning balcony is perfect for enjoying the fantastic river views. Luralda Wharf has landscaped communal gardens and is adjacent to Island Gardens Park and the Greenwich Foot Tunnel. Greenwich and Canary Wharf's plazas are popular destinations for those seeking dining and leisure. We highly recommend this property to discerning buyers.

Borough: Tower Hamlets* Council Tax: F* EPC: D Lease Term: 995 years* Service Charge: £3,215* Ground Rent: TBA
Nearest Station: Island Gardens (0.19 miles) Material Information: www.alexneil.com/material-information



APPROXIMATE GROSS INTERNAL AREA
70.36 SQ M / 757.34 SQ FT

Produced by www.myphotogenie.co.uk

Canary Wharf & Docklands Office
2 Westferry Road, Canary Wharf, London E14 8JT

t: 020 7537 9859 e: canarywharf@alexneil.com

Disclaimer: Property descriptions are subjective and used in good faith as an opinion rather than statements of fact. The owner provided information relating to title, tenure, service charges and ground rent information. Therefore, please make specific enquiries to ensure that our descriptions match your expectations of the property. Floor plan measurements are approximate and for illustrative purposes only. Furthermore, we have not tested any services, systems or appliances at this property. And we strongly recommend that you verify all the provided information on inspection and that your surveyor and conveyancer further confirm details. Also, market conditions and property values regularly fluctuate. And showcased sold properties demonstrate our previous successes rather than indicate live property values. *As advised by the owner. **Property sold subject to contract.



ALEX NEIL

ESTATE AGENTS SINCE 1984