



CORBIDGE COURT SE8
2 bedroom apartment

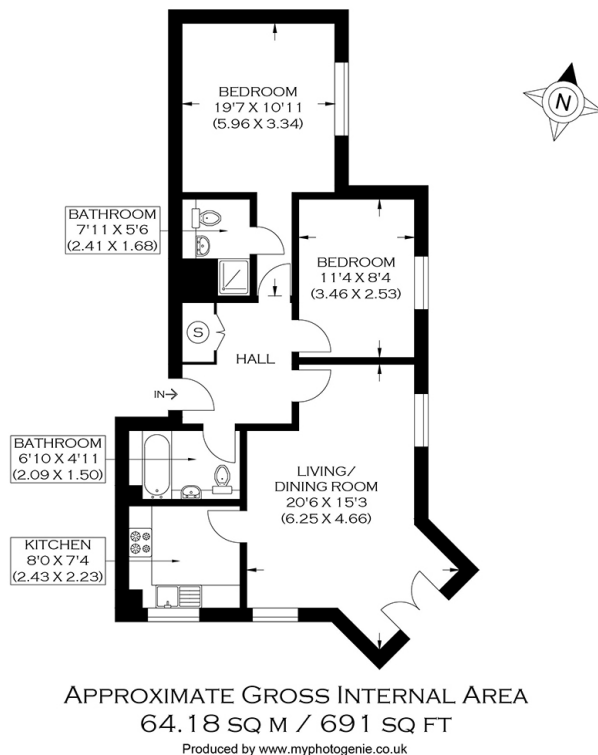
£450,000
SOLD



CORBIDGE COURT SE8

A substantially sized two bedroom apartment, set in this enviable gated development on Corbridge Court, Glaisher Street, Greenwich SE8. The apartment is modern and neutrally decorated throughout. Internally comprising a large, triple aspect reception room with stunning River Views, a separate fitted kitchen, two double bedrooms, the master with an en-suite shower room and a family bathroom. Further benefits include plenty of storage and an allocated parking space. Corbridge Court is well placed for characterful Greenwich where you can enjoy a diverse array of independent retailers and some fantastic spots for drinks with friends and the fantastic transport links including Cutty Sark and Greenwich Stations and the Greenwich foot tunnel. For nights you don't fancy cooking, you could head to The Duke for a sublime pizza whilst you could make a quick stop at Arapina Bakery in the morning for a pastry.

Borough: Royal Greenwich* Council Tax: D* EPC: C Lease Term: 180 years* Service Charge: £2,160* Ground Rent: £120*
Nearest Station: Greenwich (0.34 miles) Material Information: www.alexneil.com/material-information



Rotherhithe & Bermondsey Office
146 Lower Road, London SE16 2UG

t: 020 7237 6767 e: rotherhithe@alexneil.com

Disclaimer: Property descriptions are subjective and used in good faith as an opinion rather than statements of fact. The owner provided information relating to title, tenure, service charges and ground rent information. Therefore, please make specific enquiries to ensure that our descriptions match your expectations of the property. Floor plan measurements are approximate and for illustrative purposes only. Furthermore, we have not tested any services, systems or appliances at this property. And we strongly recommend that you verify all the provided information on inspection and that your surveyor and conveyancer further confirm details. Also, market conditions and property values regularly fluctuate. And showcased sold properties demonstrate our previous successes rather than indicate live property values. *As advised by the owner. **Property sold subject to contract.



ALEX NEIL

ESTATE AGENTS SINCE 1984