



LEWISHAM WAY SE14
2 bedroom duplex apartment

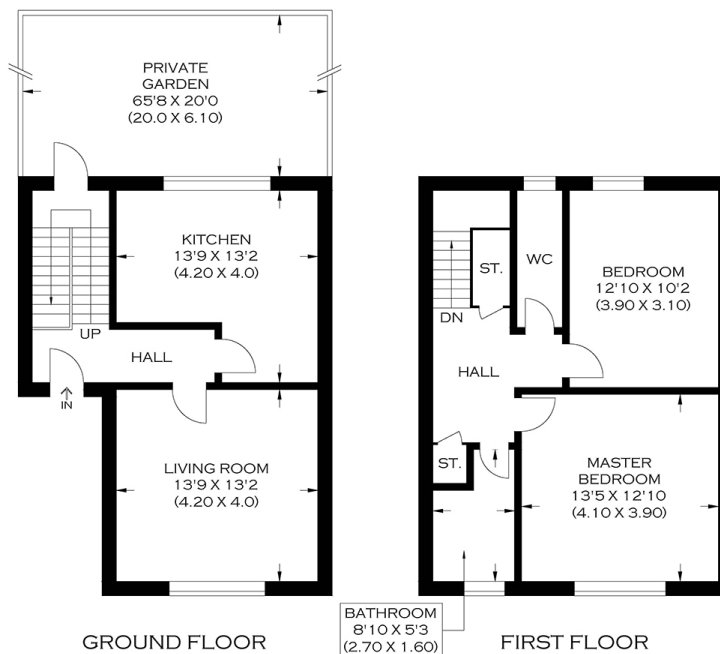
£450,000
SOLD



LEWISHAM WAY SE14

A fantastic two bedroom duplex apartment, superbly located in Lewisham Way, New Cross SE14. Ideally positioned for a number of transport links offering easy access into Central London, The City and Canary Wharf. Arranged over two floors, the inviting hallway leads to a spacious lounge and a separate modern kitchen/diner with high ceilings and views over the private garden. The first floor boasts two large bedrooms, a separate water closet and a modern family bathroom. This property also enjoys the benefits of ample storage and gas central heating. Lewisham Way is within easy reach of the historic Fordham Park providing a wonderful green open space for a picnic with friends or picturesque setting to walk the dog. The Vendor has renovated this property to a high standard and with the addition of no onward chain, we recommend viewing this superb apartment immediately.

Borough: Lewisham* Council Tax: C* EPC: TBA Lease Term: 125 years* Service Charge: £515* Ground Rent: £250*
Nearest Station: New Cross (0.17 miles) Material Information: www.alexneil.com/material-information



APPROXIMATE GROSS INTERNAL AREA
89.72 SQ M / 965.73 SQ FT

Produced by www.myphotogenie.co.uk

Rotherhithe & Bermondsey Office
146 Lower Road, London SE16 2UG

t: 020 7237 6767 e: rotherhithe@alexneil.com

Disclaimer: Property descriptions are subjective and used in good faith as an opinion rather than statements of fact. The owner provided information relating to title, tenure, service charges and ground rent information. Therefore, please make specific enquiries to ensure that our descriptions match your expectations of the property. Floor plan measurements are approximate and for illustrative purposes only. Furthermore, we have not tested any services, systems or appliances at this property. And we strongly recommend that you verify all the provided information on inspection and that your surveyor and conveyancer further confirm details. Also, market conditions and property values regularly fluctuate. And showcased sold properties demonstrate our previous successes rather than indicate live property values. *As advised by the owner. **Property sold subject to contract.



ALEX NEIL

ESTATE AGENTS SINCE 1984