



COPENHAGEN COURT SE8
1 bedroom apartment

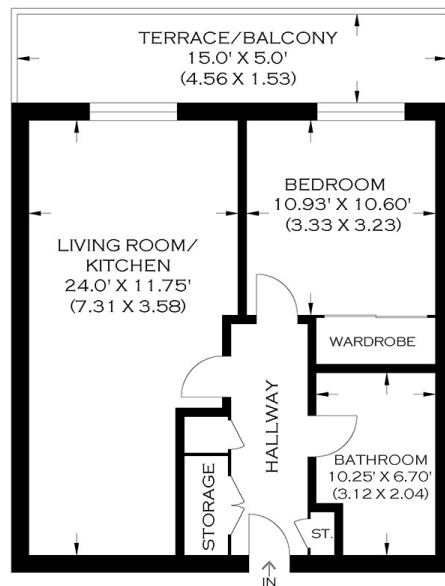
£415,000
SOLD



COPENHAGEN COURT SE8

This resplendent one-bedroom apartment is in Copenhagen Court, Pell Street, Deptford SE8, forming part of the luxurious Greenland Place Development. This apartment offers stylish yet comfortable living and boasts a large open-plan living room with a sleek fitted kitchen, a large bedroom and a sumptuous four-piece bathroom. Alongside the impeccable finish, the apartment enjoys underfloor heating and a large private balcony, a wonderfully relaxing space after a long day. Additionally, there is secure parking. Residents also benefit from a 24-hour concierge service, beautiful landscaped gardens and a residents-only gymnasium. The apartment is well placed near Surrey Quays retail hub, a wealth of eateries and Canada Water Station, affording excellent travel connections. We highly recommend your earliest viewing appointment.

Borough: Lewisham* Council Tax: B* EPC: B Lease Term: 994* Service Charge: £2,000* Ground Rent: £300*



APPROXIMATE GROSS INTERNAL AREA
51.78 SQ M / 557.35 SQ FT

PRODUCED BY WWW.MYPHOTOGENIE.CO.UK

Rotherhithe & Bermondsey Office
146 Lower Road, London SE16 2UG

t: 020 7237 6767 e: rotherhithe@alexneil.com

Disclaimer: Property descriptions are subjective and used in good faith as an opinion rather than statements of fact. The owner provided information relating to title, tenure, service charges and ground rent information. Therefore, please make specific enquiries to ensure that our descriptions match your expectations of the property. Floor plan measurements are approximate and for illustrative purposes only. Furthermore, we have not tested any services, systems or appliances at this property. And we strongly recommend that you verify all the provided information on inspection and that your surveyor and conveyancer further confirm details. Also, market conditions and property values regularly fluctuate. And showcased sold properties demonstrate our previous successes rather than indicate live property values. *As advised by the owner. **Property sold subject to contract.



ALEX NEIL

ESTATE AGENTS SINCE 1984