



DUESBURY HOUSE E3
1 bedroom apartment

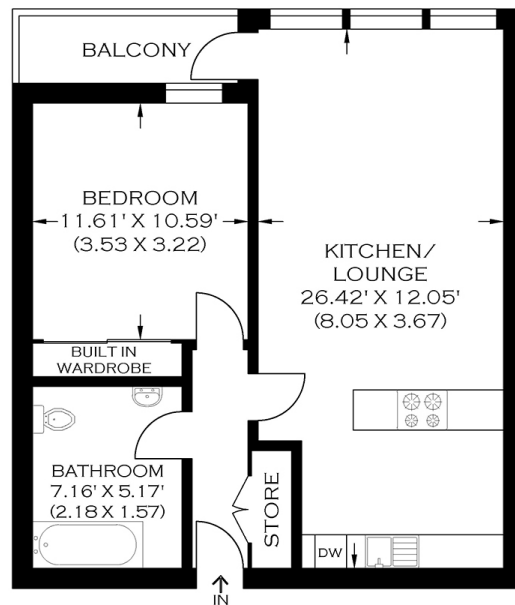
£375,000
SOLD



DUESBURY HOUSE E3

A superbly spacious and immaculately presented one-bedroom apartment in the desirable Duesbury House, St. Pauls Way, Bow E3. Duesbury House is part of the recently built Bow Garden Square Development. This property boasts a large open-plan living room with a sleek fitted kitchen, a large bedroom and a luxurious three-piece bathroom. In addition, the apartment has a large private balcony and underfloor heating. Bow Garden Square has convenient access to Devons Road and Mile End Stations and a wealth of local amenities. This immaculate apartment would make an ideal home for professionals looking for a relaxing setting. We strongly recommend booking your appointment to view this apartment.

Borough: Tower Hamlets* Council Tax: C* EPC: B Lease Term: 246 years* Service Charge: £1,265* Ground Rent: £250*
Nearest Station: Devons Road (0.51 miles) Material Information: www.alexneil.com/material-information



APPROXIMATE GROSS INTERNAL AREA
50.80 SQ M / 546.80.0 SQ FT

PRODUCED BY WWW.MYPHOTOGENIE.CO.UK

Canary Wharf & Docklands Office
2 Westferry Road, Canary Wharf, London E14 8JT

t: 020 7537 9859 e: canarywharf@alexneil.com

Disclaimer: Property descriptions are subjective and used in good faith as an opinion rather than statements of fact. The owner provided information relating to title, tenure, service charges and ground rent information. Therefore, please make specific enquiries to ensure that our descriptions match your expectations of the property. Floor plan measurements are approximate and for illustrative purposes only. Furthermore, we have not tested any services, systems or appliances at this property. And we strongly recommend that you verify all the provided information on inspection and that your surveyor and conveyancer further confirm details. Also, market conditions and property values regularly fluctuate. And showcased sold properties demonstrate our previous successes rather than indicate live property values. *As advised by the owner. **Property sold subject to contract.



ALEX NEIL

ESTATE AGENTS SINCE 1984