



SKY VIEW TOWER E15
3 bedroom apartment

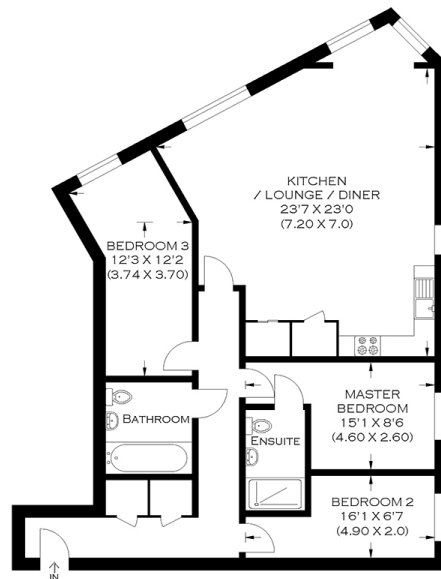
£475,000
SOLD



SKY VIEW TOWER E15

An impeccably presented three-bedroom apartment finished to exacting standards and set within the prestigious Sky View Tower in Stratford E15. The apartment takes advantage of its eighteenth-floor positioning with unparalleled views over London. The welcoming hallway leads to an expansive, dual-aspect, open-plan living area with a sleek fitted kitchen affording an excellent entertaining space and a comfortable living room. The three large bedrooms, a master with a chic en-suite and a contemporary three-piece bathroom complete the accommodation. An array of regular bus services, Pudding Mill Lane DLR Station and Bromley-By-Bow for the District and Hammersmith and City Lines all serve Sky View Tower. Sky View Tower offers excellent contemporary living in East London. We highly recommend organising your appointment to view this apartment.

Borough: Newham* Council Tax: D* EPC: B Lease Term: 993 years* Service Charge: £3,200* Ground Rent: £500*
Nearest Station: Pudding Mill Lane (0.24 miles) Material Information: www.alexneil.com/material-information



APPROXIMATE GROSS INTERNAL AREA
93.71 SQ M / 1008.68 SQ FT

Canary Wharf & Docklands Office
2 Westferry Road, Canary Wharf, London E14 8JT

t: 020 7537 9859 e: canarywharf@alexneil.com

Disclaimer: Property descriptions are subjective and used in good faith as an opinion rather than statements of fact. The owner provided information relating to title, tenure, service charges and ground rent information. Therefore, please make specific enquiries to ensure that our descriptions match your expectations of the property. Floor plan measurements are approximate and for illustrative purposes only. Furthermore, we have not tested any services, systems or appliances at this property. And we strongly recommend that you verify all the provided information on inspection and that your surveyor and conveyancer further confirm details. Also, market conditions and property values regularly fluctuate. And showcased sold properties demonstrate our previous successes rather than indicate live property values. *As advised by the owner. **Property sold subject to contract.



ALEX NEIL

ESTATE AGENTS SINCE 1984