



AMSTERDAM ROAD E14
1 bedroom apartment

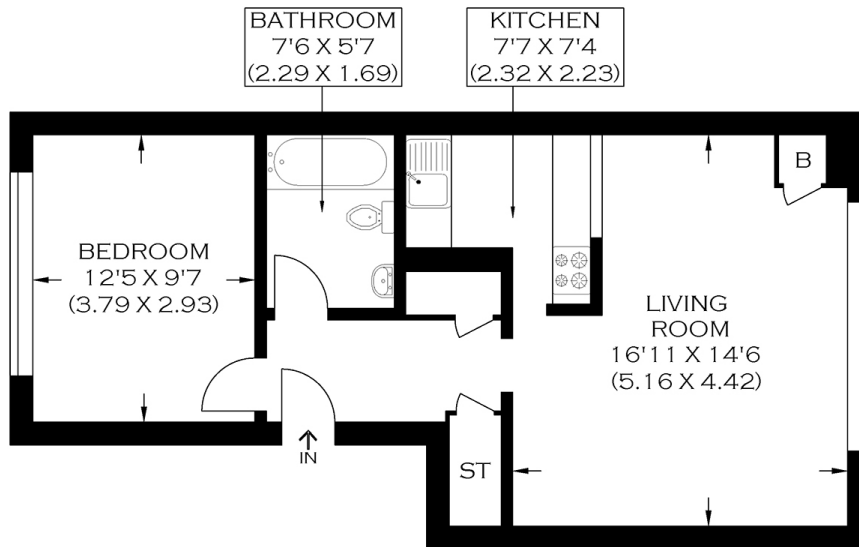
£350,000
SOLD



AMSTERDAM ROAD E14

Ideally situated within easy reach of Crossharbour DLR and Canary Wharf, this one-bedroom apartment is on Amsterdam Road, London Yard, Isle of Dogs E14. This impressive well-proportioned property comprises a semi-open-plan, newly fitted kitchen and a spacious reception room, a large double bedroom and a modern three-piece bathroom suite. Further benefits include ample storage, double glazing, two parking spaces, security and breathtaking gardens. London Yard and Amsterdam Road are highly sought-after because of their peaceful location and easy access to Canary Wharf's vibrancy and amenities.

Borough: Tower Hamlets* Council Tax: C* EPC: B Lease Term: 963* Service Charge: £2,900* Ground Rent: £40*



APPROXIMATE GROSS INTERNAL AREA
47.42 SQ M / 510.0 SQ FT
PRODUCED BY WWW.MYPHOTOGENIE.CO.UK

Canary Wharf & Docklands Office
2 Westferry Road, Canary Wharf, London E14 8JT

t: 020 7537 9859 e: canarywharf@alexneil.com

Disclaimer: Property descriptions are subjective and used in good faith as an opinion rather than statements of fact. The owner provided information relating to title, tenure, service charges and ground rent information. Therefore, please make specific enquiries to ensure that our descriptions match your expectations of the property. Floor plan measurements are approximate and for illustrative purposes only. Furthermore, we have not tested any services, systems or appliances at this property. And we strongly recommend that you verify all the provided information on inspection and that your surveyor and conveyancer further confirm details. Also, market conditions and property values regularly fluctuate. And showcased sold properties demonstrate our previous successes rather than indicate live property values. *As advised by the owner. **Property sold subject to contract.



ALEX NEIL

ESTATE AGENTS SINCE 1984