



WHEEL HOUSE E14
2 bedroom apartment

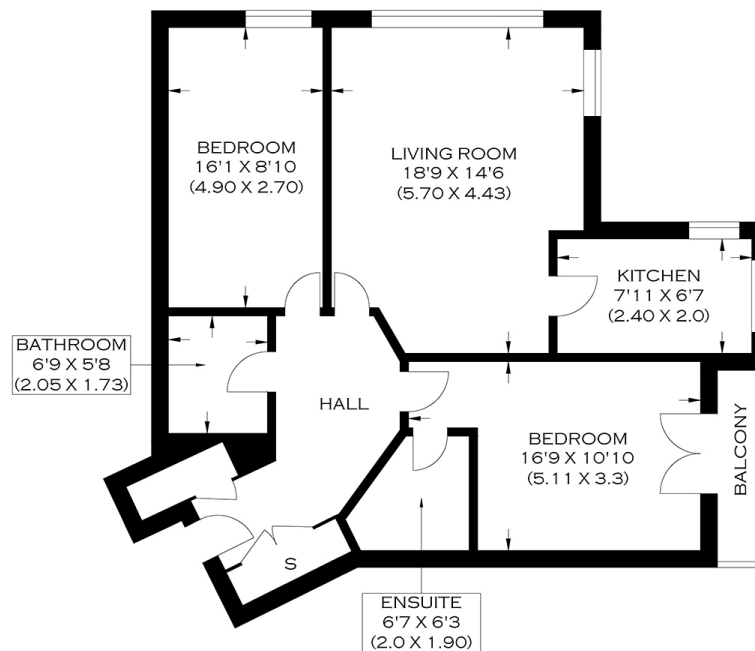
£550,000
SOLD



WHEEL HOUSE E14

This contemporary two double-bedroom apartment is in a sought-after residential development Wheel House, Burrells Wharf Square, Isle of Dogs E14. The apartment boasts stunning views of the River Thames and beyond and offers a bright living room with ample natural light, a fully fitted modern kitchen, two double bedrooms, a three-piece family bathroom and an en-suite shower room to the main bedroom. Other features include a share of freehold, a private balcony of the main bedroom, underground parking, beautiful views over the Thames, finished with modern decor throughout, and there is no onward chain. Fantastic resident facilities are also available, including a gymnasium and swimming pool. We recommend booking your appointment to view it.

Borough: Tower Hamlets* Council Tax: F* EPC: C Lease Term: 92* Service Charge: £4,000* Ground Rent: £25*



APPROXIMATE GROSS INTERNAL AREA
80.25 SQ M / 863.80 SQ FT

PRODUCED BY WWW.MYPHOTOGENIE.CO.UK

Canary Wharf & Docklands Office

2 Westferry Road, Canary Wharf, London E14 8JT

t: 020 7537 9859 e: canarywharf@alexneil.com

Disclaimer: Property descriptions are subjective and used in good faith as an opinion rather than statements of fact. The owner provided information relating to title, tenure, service charges and ground rent information. Therefore, please make specific enquiries to ensure that our descriptions match your expectations of the property. Floor plan measurements are approximate and for illustrative purposes only. Furthermore, we have not tested any services, systems or appliances at this property. And we strongly recommend that you verify all the provided information on inspection and that your surveyor and conveyancer further confirm details. Also, market conditions and property values regularly fluctuate. And showcased sold properties demonstrate our previous successes rather than indicate live property values. *As advised by the owner. **Property sold subject to contract.



ALEX NEIL

ESTATE AGENTS SINCE 1984