



CUBITT WHARF E14  
**2 bedroom apartment**

**£600,000**  
SOLD

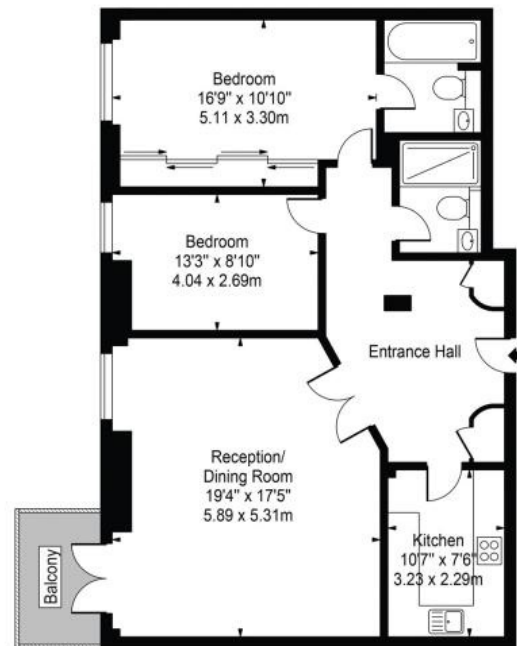




# CUBITT WHARF E14

A superbly presented chain-free, two-bedroom apartment set in one of the few original warehouses, Cubitt Wharf, Stors Quay, Isle of Dogs E14. Cubitt Wharf is a stunning and unique riverside warehouse development that offers fantastic views over the River Thames and Greenwich Peninsula. The property comprises a large, airy living room with a large private balcony, a stylish kitchen, a main bedroom with an en-suite bathroom, a second large bedroom, and a modern family bathroom. The apartment boasts stunning original features, great storage space and allocated parking. We recommend your earliest inspection of this property.

Borough: Tower Hamlets\* Council Tax: F\* EPC: C Lease Term: 976 years\* Service Charge: £3,800\* Ground Rent: £150\*  
Nearest Station: Island Gardens (0.36 miles) Material Information: [www.alexneil.com/material-information](http://www.alexneil.com/material-information)



Approx. Gross Internal Area 980 Sq Ft - 91.04 Sq M

## Canary Wharf & Docklands Office

2 Westferry Road, Canary Wharf, London E14 8JT

t: 020 7537 9859 e: [canarywharf@alexneil.com](mailto:canarywharf@alexneil.com)

Disclaimer: Property descriptions are subjective and used in good faith as an opinion rather than statements of fact. The owner provided information relating to title, tenure, service charges and ground rent information. Therefore, please make specific enquiries to ensure that our descriptions match your expectations of the property. Floor plan measurements are approximate and for illustrative purposes only. Furthermore, we have not tested any services, systems or appliances at this property. And we strongly recommend that you verify all the provided information on inspection and that your surveyor and conveyancer further confirm details. Also, market conditions and property values regularly fluctuate. And showcased sold properties demonstrate our previous successes rather than indicate live property values. \*As advised by the owner. \*\*Property sold subject to contract.



# ALEX NEIL

ESTATE AGENTS SINCE 1984

2024 signifies our **40th Anniversary**, and we are immensely proud to have reached this impressive longevity milestone. In celebration, we launched an **exceptional promotion** for sellers, affording them increased marketing exposure for free!

**40 years of expertise:** With four decades of experience, we bring a wealth of knowledge and expertise. Our durability is a testament to the trust satisfied clients place in us. We understand the nuances of the diverse neighbourhoods we cover. Our local expertise allows us to provide tailored solutions, whether you're buying or selling, allowing you to move with confidence.



ALEX NEIL

ESTATE AGENTS SINCE 1984

[www.alexneil.com](http://www.alexneil.com)