



ABBOTTS WHARF E14  
**1 bedroom penthouse**

**£450,000**  
SOLD

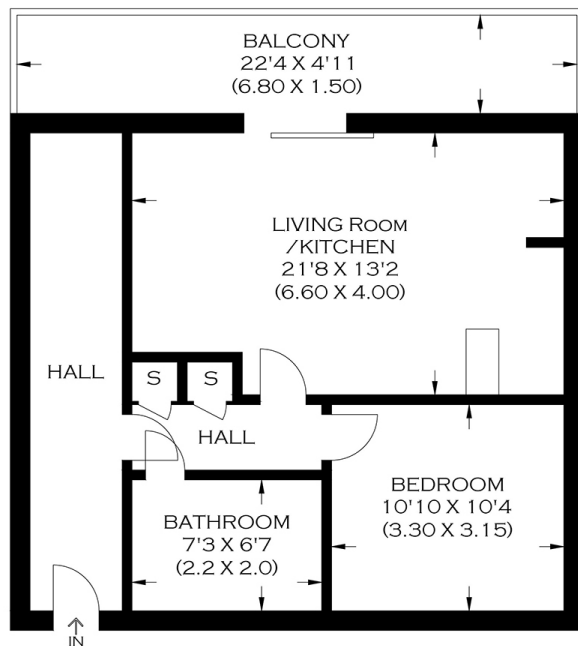




# ABBOTTS WHARF E14

This one-bedroom penthouse is on the top floor of Abbots Wharf, Stainsby Road, Poplar E14. The apartment has unparalleled views over Canary Wharf and the City. Abbots Wharf is on the idyllic and sought-after Limehouse Cut canal and benefits from many local transport options in and out of the City. The property has a large open-plan lounge and kitchen, direct access to a large terrace, a spacious double bedroom and a modern three-piece bathroom. The apartment also benefits from a large entrance with floor-to-ceiling windows offering direct views over Canary Wharf. We highly recommend this unique property.

Borough: Tower Hamlets\* Council Tax: D\* EPC: C Lease Term: 988 years\* Service Charge: £3,000\* Ground Rent: £250\*  
Nearest Station: Langdon Park (0.42 miles) Material Information: [www.alexneil.com/material-information](http://www.alexneil.com/material-information)



APPROXIMATE GROSS INTERNAL AREA  
59.57 SQ M / 641.20 SQ FT

**Canary Wharf & Docklands Office**  
**2 Westferry Road, Canary Wharf, London E14 8JT**

t: 020 7537 9859 e: [canarywharf@alexneil.com](mailto:canarywharf@alexneil.com)

Disclaimer: Property descriptions are subjective and used in good faith as an opinion rather than statements of fact. The owner provided information relating to title, tenure, service charges and ground rent information. Therefore, please make specific enquiries to ensure that our descriptions match your expectations of the property. Floor plan measurements are approximate and for illustrative purposes only. Furthermore, we have not tested any services, systems or appliances at this property. And we strongly recommend that you verify all the provided information on inspection and that your surveyor and conveyancer further confirm details. Also, market conditions and property values regularly fluctuate. And showcased sold properties demonstrate our previous successes rather than indicate live property values. \*As advised by the owner. \*\*Property sold subject to contract.



## ALEX NEIL

ESTATE AGENTS SINCE 1984