



WHEAT SHEAF CLOSE E14
2 bedroom apartment

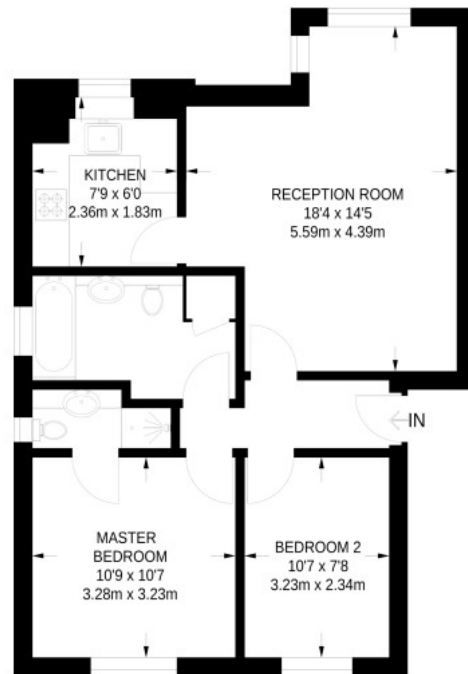
£450,000
SOLD



WHEAT SHEAF CLOSE E14

This immaculately presented two-bedroom apartment in Wheat Sheaf Close, Mill Quay, Isle of Dogs E14, offers unique, stunning views overlooking the Millwall Dock. The apartment enjoys an excellent finish throughout, with contemporary fittings. Whilst exuding style, this superb apartment also boasts comfortable living. It incorporates a well-proportioned reception room, a separate newly fitted kitchen, two double bedrooms, an en-suite bathroom to the main bedroom, and a newly refurbished family bathroom. Mill Quay and Wheat Sheaf Close are conveniently close to Mudchute DLR and Asda Superstore. Wheat Sheaf Close is a quiet, attractive development, with the lively hub of Canary Wharf being easily accessible. This property sale has no onward chain, and we recommend booking an appointment to view this apartment.

Borough: Tower Hamlets* Council Tax: E* EPC: D Lease Term: 977* Service Charge: £1,820* Ground Rent: TBA



GROUND FLOOR
649 SQ FT / 60.3 SQ M

This plan has been drawn for illustrative
and identification purposes only.

Canary Wharf & Docklands Office
2 Westferry Road, Canary Wharf, London E14 8JT

t: 020 7537 9859 e: canarywharf@alexneil.com

Disclaimer: Property descriptions are subjective and used in good faith as an opinion rather than statements of fact. The owner provided information relating to title, tenure, service charges and ground rent information. Therefore, please make specific enquiries to ensure that our descriptions match your expectations of the property. Floor plan measurements are approximate and for illustrative purposes only. Furthermore, we have not tested any services, systems or appliances at this property. And we strongly recommend that you verify all the provided information on inspection and that your surveyor and conveyancer further confirm details. Also, market conditions and property values regularly fluctuate. And showcased sold properties demonstrate our previous successes rather than indicate live property values. *As advised by the owner. **Property sold subject to contract.



ALEX NEIL

ESTATE AGENTS SINCE 1984