



NYLAND COURT SE8  
**2 bedroom apartment**

**£550,000**  
SOLD

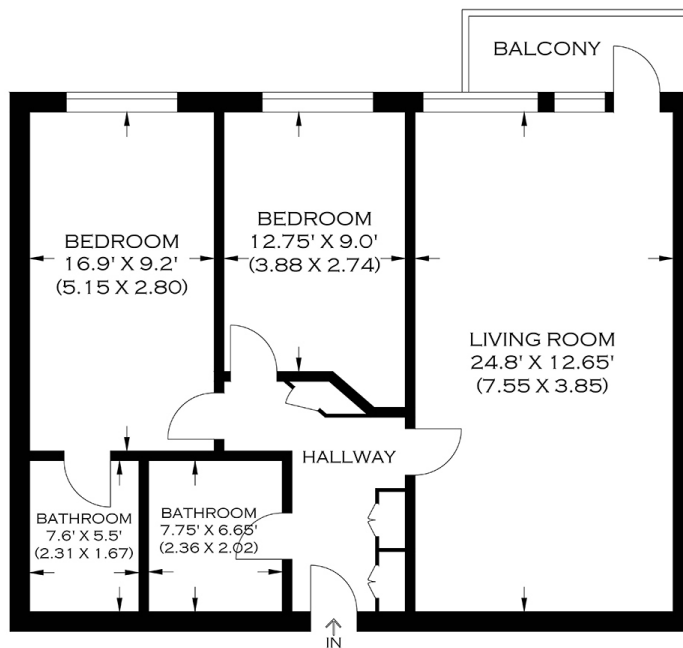




# NYLAND COURT SE8

A stylish two-bedroom raised ground floor apartment in newly developed Nyland Court, Naomi Street, Deptford SE8, forming part of the remarkable Greenland Place. Nyland Court boasts a breathtaking roof terrace, concierge services, a gymnasium, and many other facilities within the surroundings. The accommodation comprises a large open-plan kitchen with direct access to a private balcony offering eye-level views over the beautifully maintained communal gardens. There are two double bedrooms with en-suite to the master and a stylish three-piece family bathroom. Other benefits include ample storage and proximity to Canada Water Jubilee Line and Surrey Quays station. We recommend your earliest viewing appointment.

Borough: Lewisham\* Council Tax: C\* EPC: TBA Lease Term: 991 years\* Service Charge: £2,400\* Ground Rent: £350\*  
Nearest Station: Surrey Quays (0.45 miles) Material Information: [www.alexneil.com/material-information](http://www.alexneil.com/material-information)



APPROXIMATE GROSS INTERNAL AREA  
73.46 SQ M / 791 SQ FT

**Rotherhithe & Bermondsey Office**  
146 Lower Road, London SE16 2UG

t: 020 7237 6767 e: [rotherhithe@alexneil.com](mailto:rotherhithe@alexneil.com)

Disclaimer: Property descriptions are subjective and used in good faith as an opinion rather than statements of fact. The owner provided information relating to title, tenure, service charges and ground rent information. Therefore, please make specific enquiries to ensure that our descriptions match your expectations of the property. Floor plan measurements are approximate and for illustrative purposes only. Furthermore, we have not tested any services, systems or appliances at this property. And we strongly recommend that you verify all the provided information on inspection and that your surveyor and conveyancer further confirm details. Also, market conditions and property values regularly fluctuate. And showcased sold properties demonstrate our previous successes rather than indicate live property values. \*As advised by the owner. \*\*Property sold subject to contract.



## ALEX NEIL

ESTATE AGENTS SINCE 1984

2024 signifies our **40th Anniversary**, and we are immensely proud to have reached this impressive longevity milestone. In celebration, we launched an **exceptional promotion** for sellers, affording them increased marketing exposure for free!

**40 years of expertise:** With four decades of experience, we bring a wealth of knowledge and expertise. Our durability is a testament to the trust satisfied clients place in us. We understand the nuances of the diverse neighbourhoods we cover. Our local expertise allows us to provide tailored solutions, whether you're buying or selling, allowing you to move with confidence.



ALEX NEIL

ESTATE AGENTS SINCE 1984

[www.alexneil.com](http://www.alexneil.com)