



PILGRIM HOUSE SE16
2 bedroom apartment

£590,000
SOLD

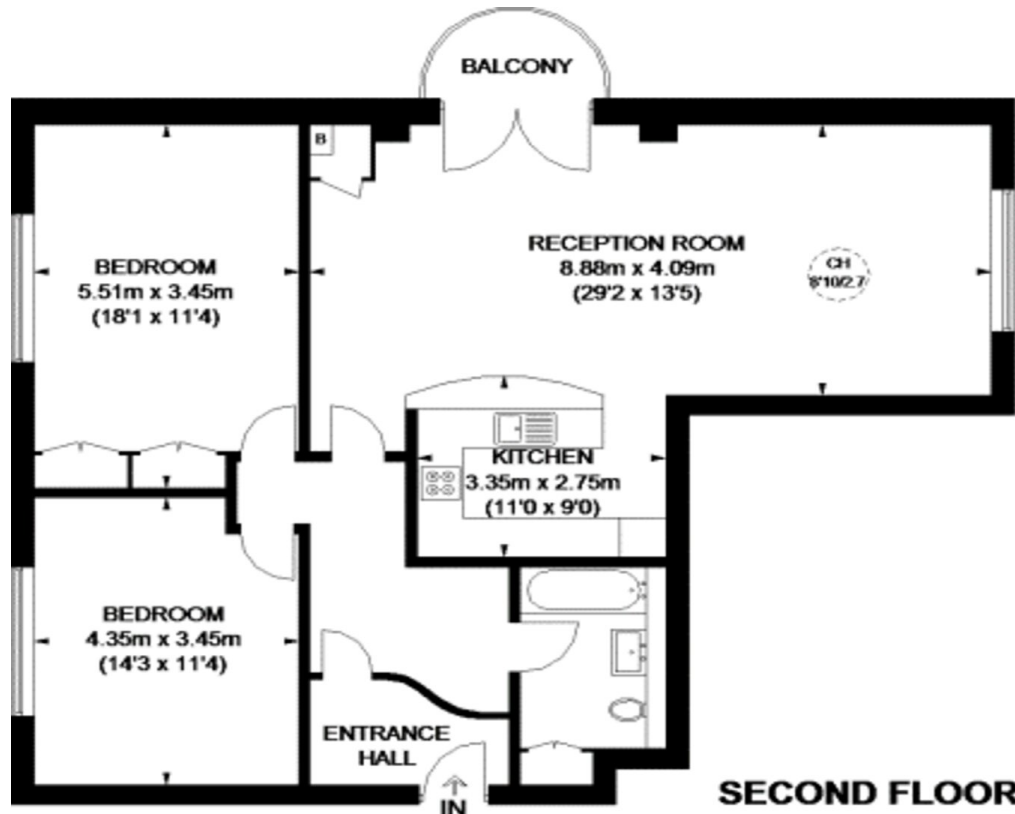


PILGRIM HOUSE SE16

Alex Neil is delighted to present this stunning converted apartment within the desirable Pilgrim House, Mayflower Street, Rotherhithe SE16. Pilgrim House boasts captivating features, including floor-to-ceiling windows and elegant views of both the King Stairs Gardens and the beautiful Southwark Park. The accommodation incorporates an exceptionally spacious open-plan reception ideally configured for entertaining and comfortable living and opens to a private balcony, offering a further space to relax and unwind. Furthermore, two sizeable bedrooms have large built-in wardrobes, a spacious family bathroom and an outer lobby with additional storage space. Mayflower Street's perfect position is ideal for Rotherhithe and Canada Water Stations offering excellent transport links. It also has easy access to many bars, restaurants, and shops nearby.

Borough: Southwark* Council Tax: E* EPC: C Lease Term: 900 years* Service Charge: £3,188* Ground Rent: TBA

Nearest Station: Rotherhithe (0.2 miles) Material Information: www.alexneil.com/material-information



Rotherhithe & Bermondsey Office
146 Lower Road, London SE16 2UG

t: 020 7237 6767 e: rotherhithe@alexneil.com

Disclaimer: Property descriptions are subjective and used in good faith as an opinion rather than statements of fact. The owner provided information relating to title, tenure, service charges and ground rent information. Therefore, please make specific enquiries to ensure that our descriptions match your expectations of the property. Floor plan measurements are approximate and for illustrative purposes only. Furthermore, we have not tested any services, systems or appliances at this property. And we strongly recommend that you verify all the provided information on inspection and that your surveyor and conveyancer further confirm details. Also, market conditions and property values regularly fluctuate. And showcased sold properties demonstrate our previous successes rather than indicate live property values. *As advised by the owner. **Property sold subject to contract.



ALEX NEIL

ESTATE AGENTS SINCE 1984