



BRIERLY GARDENS E2  
**3 bedroom apartment**

**£570,000**  
SOLD

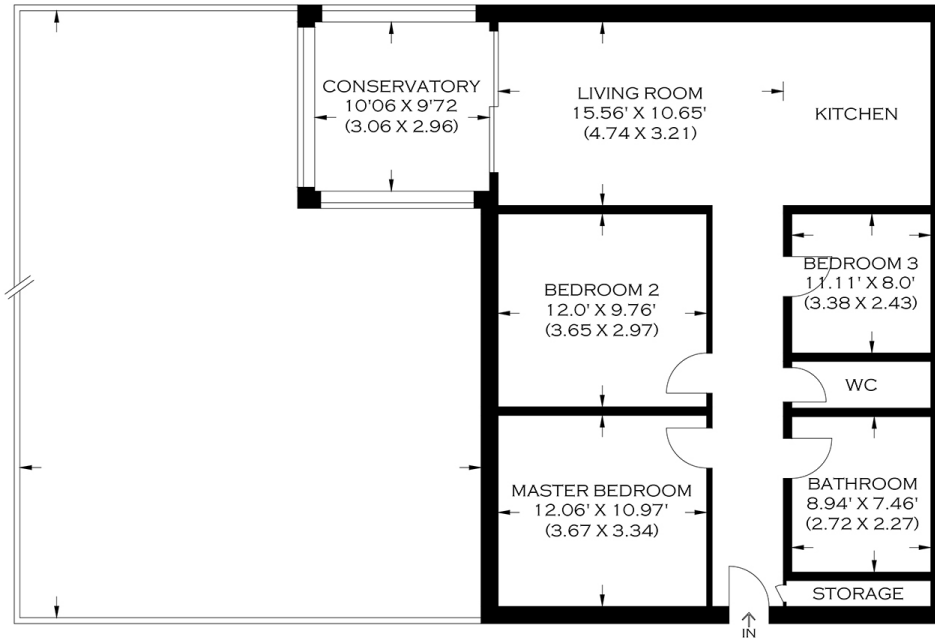




# BRIERLY GARDENS E2

A stunning three bedroom apartment, situated within the prestigious Brierly Gardens. Comprising of a large open plan kitchen/living room with direct access to a conservatory and a large garden, three double bedrooms and a modern three piece family bathroom. Further benefits include ample storage, well presented interior, a secure entry system and high-spec fixtures and fittings. Brierly Gardens is within easy reach of Bethnal Green Underground Station providing superb transport links. Also falling within the catchment of several highly regarded schools.

Borough: Tower Hamlets\* Council Tax: C\* EPC: D Lease Term: 91 years\* Service Charge: £1,100\* Ground Rent: £10\*  
Nearest Station: Bethnal Green (0.26 miles) Material Information: [www.alexneil.com/material-information](http://www.alexneil.com/material-information)



APPROXIMATE GROSS INTERNAL AREA

80.0 SQ M / 861.11 SQ FT

Produced By [www.myphotogenie.co.uk](http://www.myphotogenie.co.uk)

## Canary Wharf & Docklands Office

2 Westferry Road, Canary Wharf, London E14 8JT

t: 020 7537 9859 e: [canarywharf@alexneil.com](mailto:canarywharf@alexneil.com)

Disclaimer: Property descriptions are subjective and used in good faith as an opinion rather than statements of fact. The owner provided information relating to title, tenure, service charges and ground rent information. Therefore, please make specific enquiries to ensure that our descriptions match your expectations of the property. Floor plan measurements are approximate and for illustrative purposes only. Furthermore, we have not tested any services, systems or appliances at this property. And we strongly recommend that you verify all the provided information on inspection and that your surveyor and conveyancer further confirm details. Also, market conditions and property values regularly fluctuate. And showcased sold properties demonstrate our previous successes rather than indicate live property values. \*As advised by the owner. \*\*Property sold subject to contract.



# ALEX NEIL

ESTATE AGENTS SINCE 1984

2024 signifies our **40th Anniversary**, and we are immensely proud to have reached this impressive longevity milestone. In celebration, we launched an **exceptional promotion** for sellers, affording them increased marketing exposure for free!

**40 years of expertise:** With four decades of experience, we bring a wealth of knowledge and expertise. Our durability is a testament to the trust satisfied clients place in us. We understand the nuances of the diverse neighbourhoods we cover. Our local expertise allows us to provide tailored solutions, whether you're buying or selling, allowing you to move with confidence.



ALEX NEIL

ESTATE AGENTS SINCE 1984

[www.alexneil.com](http://www.alexneil.com)