



THE WATERGARDEN E14
1 bedroom apartment

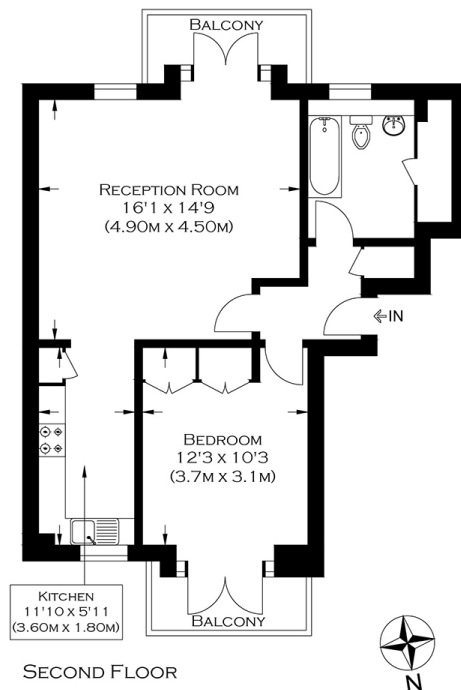
£450,000
SOLD



THE WATERGARDEN E14

This beautiful apartment is in The Watergarden, Roy Square, Limehouse E14. The Watergarden is an award-winning gated development set in the iconic Narrow Street, inviting a relaxed stroll with a choice of riverside pubs and restaurants to stop in along the way. The Watergarden offers world-famous water features, landscaped gardens, underground parking facilities and a daytime porter. This superbly presented property comprises a large open-plan kitchen/lounge with direct access to a balcony offering stunning views over Narrow Street and Canary Wharf. There is a modern bathroom, and the large bedroom has a private balcony overlooking the quiet communal garden. Offered with no onward chain and sure to attract much interest, we recommend you act quickly.

Borough: Tower Hamlets* Council Tax: C* EPC: C Lease Term: 94 years* Service Charge: £2,400* Ground Rent: £200*
Nearest Station: Limehouse (0.29 miles) Material Information: www.alexneil.com/material-information



APPROXIMATE GROSS INTERNAL AREA :
51.00 SQ M / 549.00 SQ FT

Canary Wharf & Docklands Office
2 Westferry Road, Canary Wharf, London E14 8JT

t: 020 7537 9859 e: canarywharf@alexneil.com

Disclaimer: Property descriptions are subjective and used in good faith as an opinion rather than statements of fact. The owner provided information relating to title, tenure, service charges and ground rent information. Therefore, please make specific enquiries to ensure that our descriptions match your expectations of the property. Floor plan measurements are approximate and for illustrative purposes only. Furthermore, we have not tested any services, systems or appliances at this property. And we strongly recommend that you verify all the provided information on inspection and that your surveyor and conveyancer further confirm details. Also, market conditions and property values regularly fluctuate. And showcased sold properties demonstrate our previous successes rather than indicate live property values. *As advised by the owner. **Property sold subject to contract.



ALEX NEIL

ESTATE AGENTS SINCE 1984

2024 signifies our **40th Anniversary**, and we are immensely proud to have reached this impressive longevity milestone. In celebration, we launched an **exceptional promotion** for sellers, affording them increased marketing exposure for free!

40 years of expertise: With four decades of experience, we bring a wealth of knowledge and expertise. Our durability is a testament to the trust satisfied clients place in us. We understand the nuances of the diverse neighbourhoods we cover. Our local expertise allows us to provide tailored solutions, whether you're buying or selling, allowing you to move with confidence.



ALEX NEIL

ESTATE AGENTS SINCE 1984

www.alexneil.com