



CUMBERLAND MILLS SQUARE E14  
**2 bedroom apartment**

**£475,000**  
SOLD

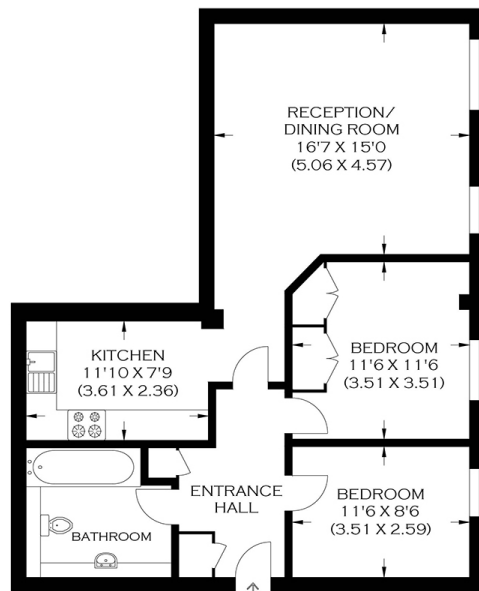




# CUMBERLAND MILLS SQUARE E14

We present a larger-than-average two-bedroom riverside apartment in the sought-after and gated Cumberland Mills Square, Isle of Dogs E14. This beautifully presented property comprises a large lounge and dining area, a modern fitted kitchen with integrated appliances, two large double bedrooms and a modern three-piece family bathroom. It features storage, large communal areas with landscaped gardens, direct River views and an allocated parking space. Cumberland Mills Square is close to the Greenwich Foot Tunnel and Island Gardens DLR. We highly recommend booking a viewing.

Borough: Tower Hamlets\* Council Tax: F\* EPC: TBA Lease Term: TBA Service Charge: TBA Ground Rent: TBA



GROUND FLOOR

APPROXIMATE GROSS INTERNAL AREA  
74.51 SQ M / 802.00 SQ FT

**Canary Wharf & Docklands Office**  
**2 Westferry Road, Canary Wharf, London E14 8JT**

t: 020 7537 9859 e: [canarywharf@alexneil.com](mailto:canarywharf@alexneil.com)

Disclaimer: Property descriptions are subjective and used in good faith as an opinion rather than statements of fact. The owner provided information relating to title, tenure, service charges and ground rent information. Therefore, please make specific enquiries to ensure that our descriptions match your expectations of the property. Floor plan measurements are approximate and for illustrative purposes only. Furthermore, we have not tested any services, systems or appliances at this property. And we strongly recommend that you verify all the provided information on inspection and that your surveyor and conveyancer further confirm details. Also, market conditions and property values regularly fluctuate. And showcased sold properties demonstrate our previous successes rather than indicate live property values. \*As advised by the owner. \*\*Property sold subject to contract.



## ALEX NEIL

ESTATE AGENTS SINCE 1984