



STUDLEY COURT E14
1 bedroom apartment

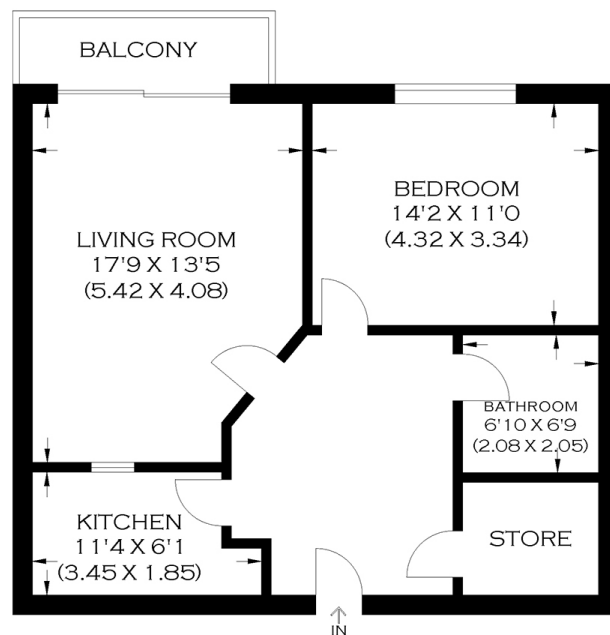
£325,000
SOLD



STUDLEY COURT E14

We present this spacious one-bedroom chain-free apartment in Studley Court, Prime Meridian Walk, Docklands E14 forming part of the modern Virginia Quay development. Neutrally decorated throughout, the accommodation comprises a reception room with access to a private balcony offering fantastic river views, a separate fully fitted kitchen with integrated appliances, a double bedroom and a modern bathroom. Benefits include concierge services, ample storage and secure parking. Virginia Quay's perfect location has East India DLR Station nearby and the vast selection of restaurants, trendy bars and shops that Canary Wharf affords.

Borough: Tower Hamlets* Council Tax: D* EPC: TBA Lease Term: TBA Service Charge: TBA Ground Rent: TBA
Nearest Station: East India (0.09 miles) Material Information: www.alexneil.com/material-information



APPROXIMATE GROSS INTERNAL AREA
63.50 SQ M / 683.50 SQ FT

Produced by www.myphotogenie.co.uk

Canary Wharf & Docklands Office
2 Westferry Road, Canary Wharf, London E14 8JT

t: 020 7537 9859 e: canarywharf@alexneil.com

Disclaimer: Property descriptions are subjective and used in good faith as an opinion rather than statements of fact. The owner provided information relating to title, tenure, service charges and ground rent information. Therefore, please make specific enquiries to ensure that our descriptions match your expectations of the property. Floor plan measurements are approximate and for illustrative purposes only. Furthermore, we have not tested any services, systems or appliances at this property. And we strongly recommend that you verify all the provided information on inspection and that your surveyor and conveyancer further confirm details. Also, market conditions and property values regularly fluctuate. And showcased sold properties demonstrate our previous successes rather than indicate live property values. *As advised by the owner. **Property sold subject to contract.



ALEX NEIL

ESTATE AGENTS SINCE 1984