



QUEEN OF DENMARK COURT SE16  
**2 bedroom apartment**

**£675,000**  
SOLD

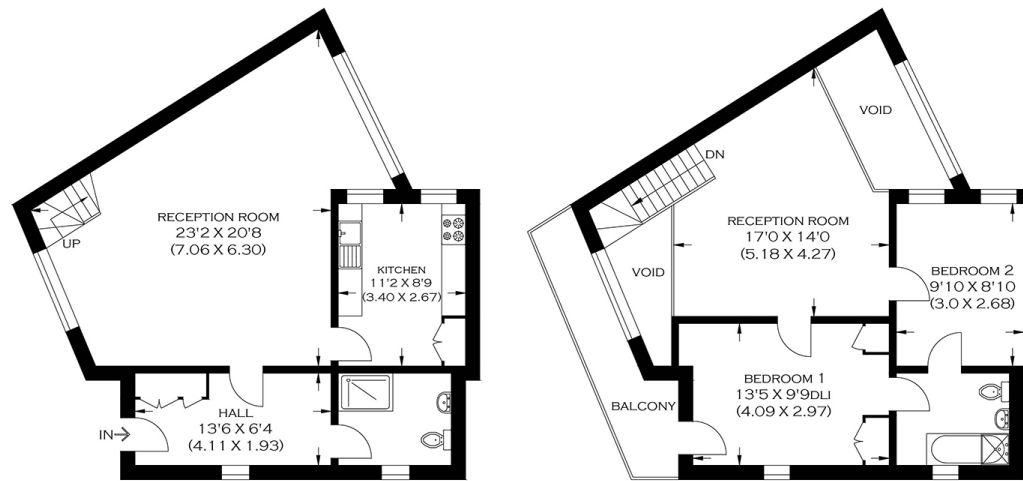




# QUEEN OF DENMARK COURT SE16

Set in one of the most iconic development in South East London, is this newly refurbished two bedroom split level apartment. Queen of Denmark Court boasts an abundance of space and light throughout. Comprising a large reception room with floor to ceiling windows offering stunning River Views, separate fitted kitchen with integrated appliances, two double bedrooms, a modern family bathroom, a wet room, and a mezzanine currently used as a second reception room. Furthering built-in wardrobes, high ceilings, a communal garden and underground parking. Viewing highly recommended.

Borough: Southwark\* Council Tax: E\* EPC: D Lease Term: TBA Service Charge: TBA Ground Rent: TBA  
Nearest Station: Surrey Quays (0.66 miles) Material Information: [www.alexneil.com/material-information](http://www.alexneil.com/material-information)



SECOND FLOOR

THIRD FLOOR



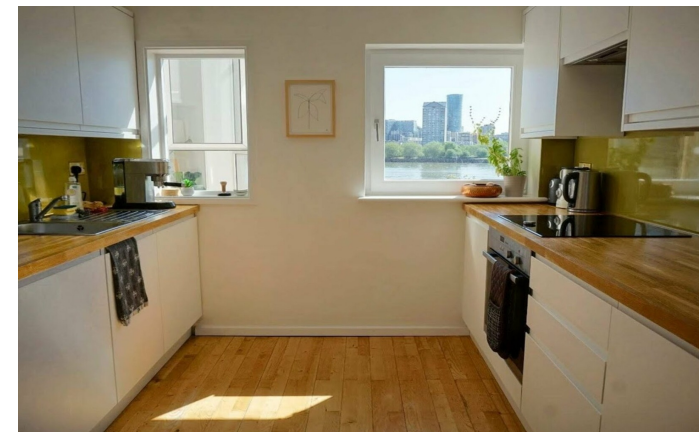
APPROXIMATE GROSS INTERNAL AREA  
102.6 SQ M / 1106 SQ FT

Produced by [www.myphotogenie.co.uk](http://www.myphotogenie.co.uk)

**Rotherhithe & Bermondsey Office**  
146 Lower Road, London SE16 2UG

t: 020 7237 6767 e: [rotherhithe@alexneil.com](mailto:rotherhithe@alexneil.com)

Disclaimer: Property descriptions are subjective and used in good faith as an opinion rather than statements of fact. The owner provided information relating to title, tenure, service charges and ground rent information. Therefore, please make specific enquiries to ensure that our descriptions match your expectations of the property. Floor plan measurements are approximate and for illustrative purposes only. Furthermore, we have not tested any services, systems or appliances at this property. And we strongly recommend that you verify all the provided information on inspection and that your surveyor and conveyancer further confirm details. Also, market conditions and property values regularly fluctuate. And showcased sold properties demonstrate our previous successes rather than indicate live property values. \*As advised by the owner. \*\*Property sold subject to contract.



# ALEX NEIL

ESTATE AGENTS SINCE 1984

2024 signifies our **40th Anniversary**, and we are immensely proud to have reached this impressive longevity milestone. In celebration, we launched an **exceptional promotion** for sellers, affording them increased marketing exposure for free!

**40 years of expertise:** With four decades of experience, we bring a wealth of knowledge and expertise. Our durability is a testament to the trust satisfied clients place in us. We understand the nuances of the diverse neighbourhoods we cover. Our local expertise allows us to provide tailored solutions, whether you're buying or selling, allowing you to move with confidence.



ALEX NEIL

ESTATE AGENTS SINCE 1984

[www.alexneil.com](http://www.alexneil.com)