



TAFFRAIL HOUSE E14
1 bedroom apartment

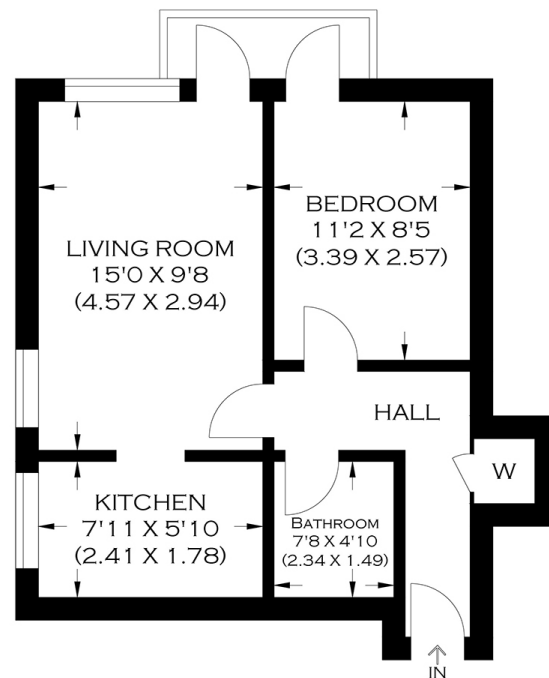
£300,000
SOLD



TAFFRAIL HOUSE E14

We present a delightful one-bedroom apartment on the second floor of the prestigious Riverside Development, Taffrail House, Burrells Wharf Square, Isle of Dogs E14. This converted warehouse boasts ample living space and neutral decor. Comprising a spacious reception room leading to a private balcony with beautiful River views, a comprehensively fitted kitchen, a main bedroom and a three-piece bathroom. Benefits include secure underground parking, and the development offers excellent residents facilities such as a concierge service, gymnasium and swimming pool. Taffrail House enjoys excellent travel connections providing the utmost convenience. It is also well placed for an array of lovely eateries and the Thames Path for a relaxing walk along the river. This superb apartment is offered chain free.

Borough: Tower Hamlets* Council Tax: D* EPC: TBA Lease Term: 93* Service Charge: £3,000* Ground Rent: £100*



APPROXIMATE GROSS INTERNAL AREA
37.95 SQ M / 408.49 SQ FT

Canary Wharf & Docklands Office
2 Westferry Road, Canary Wharf, London E14 8JT

t: 020 7537 9859 e: canarywharf@alexneil.com

Disclaimer: Property descriptions are subjective and used in good faith as an opinion rather than statements of fact. The owner provided information relating to title, tenure, service charges and ground rent information. Therefore, please make specific enquiries to ensure that our descriptions match your expectations of the property. Floor plan measurements are approximate and for illustrative purposes only. Furthermore, we have not tested any services, systems or appliances at this property. And we strongly recommend that you verify all the provided information on inspection and that your surveyor and conveyancer further confirm details. Also, market conditions and property values regularly fluctuate. And showcased sold properties demonstrate our previous successes rather than indicate live property values. *As advised by the owner. **Property sold subject to contract.



ALEX NEIL

ESTATE AGENTS SINCE 1984