



WHITBY HOUSE E14  
**2 bedroom apartment**

**£485,000**  
SOLD

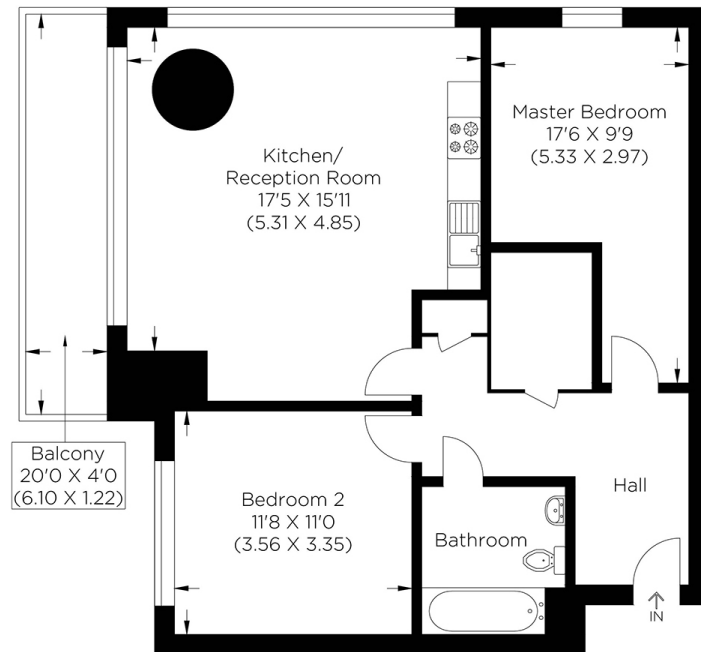




# WHITBY HOUSE E14

We present a bright and modern two-bedroom apartment in the heart of Canary Wharf on the eighth floor of Whitby House, Landmark East Tower, Marsh Wall E14. Boasting a fantastic location, the Landmark offers exquisite city living whilst allowing leisurely access to the vibrancy of Canary Wharf and all the amenities it affords. A selection of trendy bars and restaurants is the perfect way to finish a busy week at work with an effortless journey home. Internally, this exquisite apartment boasts an open-plan living/kitchen area, two large double bedrooms, a contemporary three-piece bathroom and a large balcony offering stunning views of Canary Wharf. The options are boundless, with exceptional travel connections, such as a regular bus service, Heron Quays, Canary Wharf Jubilee Line, and DLR stations. We recommend you look over this fabulous apartment as soon as possible.

Borough: Tower Hamlets\* Council Tax: E\* EPC: B Lease Term: 116\* Service Charge: £1,836\* Ground Rent: TBA



Approximate gross internal area  
74.50 sq m / 802.0 sq ft

**Canary Wharf & Docklands Office**  
**2 Westferry Road, Canary Wharf, London E14 8JT**

**t: 020 7537 9859 e: [canarywharf@alexneil.com](mailto:canarywharf@alexneil.com)**

Disclaimer: Property descriptions are subjective and used in good faith as an opinion rather than statements of fact. The owner provided information relating to title, tenure, service charges and ground rent information. Therefore, please make specific enquiries to ensure that our descriptions match your expectations of the property. Floor plan measurements are approximate and for illustrative purposes only. Furthermore, we have not tested any services, systems or appliances at this property. And we strongly recommend that you verify all the provided information on inspection and that your surveyor and conveyancer further confirm details. Also, market conditions and property values regularly fluctuate. And showcased sold properties demonstrate our previous successes rather than indicate live property values. \*As advised by the owner. \*\*Property sold subject to contract.



# ALEX NEIL

ESTATE AGENTS SINCE 1984