



FLANDERS ROAD E6
3 bedroom apartment

£340,000
SOLD



FLANDERS ROAD E6

A generously proportioned three bedroom maisonette, situated in the ever popular Flanders Road which is within easy access of the High Street. This superbly positioned property is well presented throughout and comprises a large reception room, separate kitchen, three spacious bedrooms and two bathrooms. There is a private garden; perfect for the kids to wear themselves out or entertaining friends of an evening. Benefits include storage space, gas central heating and residents parking. Ideally placed for excellent transport links and a selection of local amenities.

Borough: Newham* Council Tax: B* EPC: D Lease Term: TBA Service Charge: TBA Ground Rent: TBA
Nearest Station: East Ham (0.82 miles) Material Information: www.alexneil.com/material-information

Approximate Gross Internal Area: 89.11 sq m / 959 sq ft

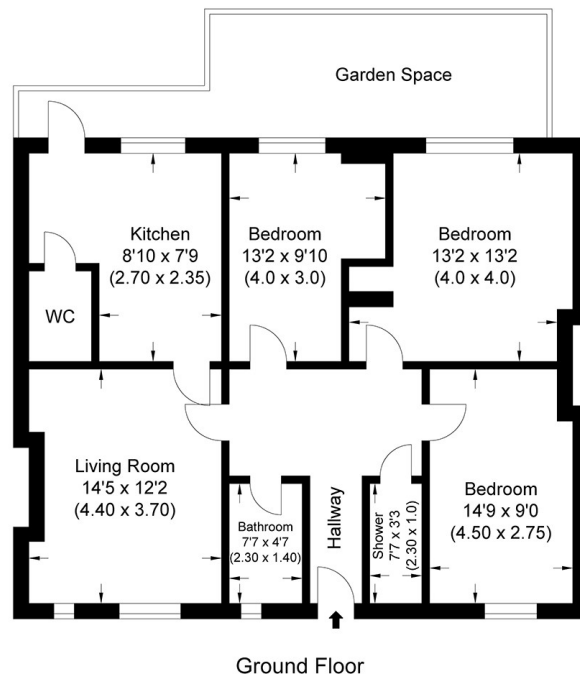


Illustration for identification purposes only, measurements are approximate, not to scale.

Canary Wharf & Docklands Office
2 Westferry Road, Canary Wharf, London E14 8JT

t: 020 7537 9859 e: canarywharf@alexneil.com

Disclaimer: Property descriptions are subjective and used in good faith as an opinion rather than statements of fact. The owner provided information relating to title, tenure, service charges and ground rent information. Therefore, please make specific enquiries to ensure that our descriptions match your expectations of the property. Floor plan measurements are approximate and for illustrative purposes only. Furthermore, we have not tested any services, systems or appliances at this property. And we strongly recommend that you verify all the provided information on inspection and that your surveyor and conveyancer further confirm details. Also, market conditions and property values regularly fluctuate. And showcased sold properties demonstrate our previous successes rather than indicate live property values. *As advised by the owner. **Property sold subject to contract.



ALEX NEIL

ESTATE AGENTS SINCE 1984