



BRIDGE MEADOWS SE14  
**1 bedroom apartment**

**£235,000**  
SOLD





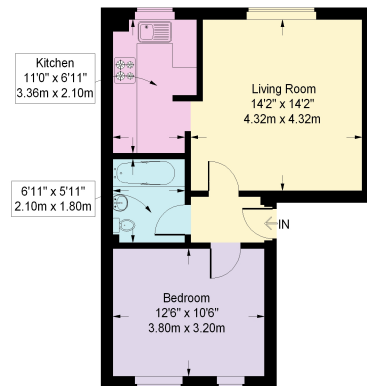
# BRIDGE MEADOWS SE14

A chain free one bedroom apartment, set within a quiet and convenient Development. This superb property comprises of a spacious reception room, contemporary fitted kitchen, large double bedroom and modern three-piece bathroom. Benefits include ample storage and allocated parking. Bridge Meadows offers excellent transport links by way of South Bermondsey Station and frequent bus services. There are also a selection of local amenities within easy reach. This well presented apartment would be an ideal investment or first time purchase.

Borough: Lewisham\* Council Tax: B\* EPC: F Lease Term: 160 years\* Service Charge: £1,085\* Ground Rent: £10\*  
Nearest Station: South Bermondsey (0.35 miles) Material Information: [www.alexneil.com/material-information](http://www.alexneil.com/material-information)

## Bridge Meadows

Approximate Gross Internal Area  
44.7 sq m / 481 sq ft



Second Floor

This plan is for layout guidance only. Not drawn to scale unless stated. Windows and door openings are approximate. Whilst every care is taken in the preparation of this plan, please check all dimensions, shapes and compass bearings before making any decisions reliant upon them. (ID119951)



**Rotherhithe & Bermondsey Office**  
146 Lower Road, London SE16 2UG

Disclaimer: Property descriptions are subjective and used in good faith as an opinion rather than statements of fact. The owner provided information relating to title, tenure, service charges and ground rent information. Therefore, please make specific enquiries to ensure that our descriptions match your expectations of the property. Floor plan measurements are approximate and for illustrative purposes only. Furthermore, we have not tested any services, systems or appliances at this property. And we strongly recommend that you verify all the provided information on inspection and that your surveyor and conveyancer further confirm details. Also, market conditions and property values regularly fluctuate. And showcased sold properties demonstrate our previous successes rather than indicate live property values. \*As advised by the owner. \*\*Property sold subject to contract.

t: 020 7237 6767 e: [rotherhithe@alexneil.com](mailto:rotherhithe@alexneil.com)



# ALEX NEIL

ESTATE AGENTS SINCE 1984

2024 signifies our **40th Anniversary**, and we are immensely proud to have reached this impressive longevity milestone. In celebration, we launched an **exceptional promotion** for sellers, affording them increased marketing exposure for free!

**40 years of expertise:** With four decades of experience, we bring a wealth of knowledge and expertise. Our durability is a testament to the trust satisfied clients place in us. We understand the nuances of the diverse neighbourhoods we cover. Our local expertise allows us to provide tailored solutions, whether you're buying or selling, allowing you to move with confidence.



ALEX NEIL

ESTATE AGENTS SINCE 1984

[www.alexneil.com](http://www.alexneil.com)