



PIERHEAD LOCK E14
2 bedroom apartment

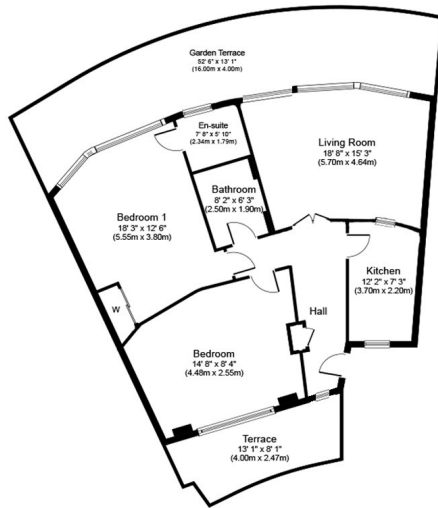
£600,000
SOLD



PIERHEAD LOCK E14

A wonderfully presented two bedroom garden apartment, set in the award-winning Pierhead Lock Development. This stunning property benefits from a newly fitted kitchen, separate living-room with direct access to a larger than average garden, large master bedroom (with en-suite), a good sized second bedroom (with private patio) and a stylish family bathroom. Pierhead Lock has fantastic connections by way of Crossharbour and London Arena Station and frequent bus services. Offered with no onward chain, an early internal inspection is highly recommended.

Borough: Tower Hamlets* Council Tax: F* EPC: D Lease Term: TBA Service Charge: TBA Ground Rent: TBA



Approximate Floor Area
1,130 sq. ft.
(105.0 sq. m.)



Canary Wharf & Docklands Office
2 Westferry Road, Canary Wharf, London E14 8JT

t: 020 7537 9859 e: canarywharf@alexneil.com

Disclaimer: Property descriptions are subjective and used in good faith as an opinion rather than statements of fact. The owner provided information relating to title, tenure, service charges and ground rent information. Therefore, please make specific enquiries to ensure that our descriptions match your expectations of the property. Floor plan measurements are approximate and for illustrative purposes only. Furthermore, we have not tested any services, systems or appliances at this property. And we strongly recommend that you verify all the provided information on inspection and that your surveyor and conveyancer further confirm details. Also, market conditions and property values regularly fluctuate. And showcased sold properties demonstrate our previous successes rather than indicate live property values. *As advised by the owner. **Property sold subject to contract.

ALEX NEIL

ESTATE AGENTS SINCE 1984