



BOARDWALK PLACE E14
1 bedroom apartment

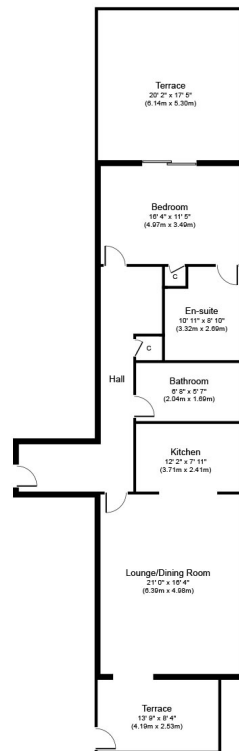
£550,000
SOLD



BOARDWALK PLACE E14

Alex Neil is proud to present, this unique one bedroom apartment, set in this sought after Dockside Development. Boardwalk Place is set in a superb location in the shadow of canary wharf and boasts a large living room, a fully fitted kitchen, large bedroom (with en-suite), and a modern family bathroom. Boasting a balcony with Dock views, a private garden, concierge and an allocated parking space.

Borough: Tower Hamlets* Council Tax: D* EPC: C Lease Term: TBA Service Charge: TBA Ground Rent: TBA
Nearest Station: Blackwall (0.24 miles) Material Information: www.alexneil.com/material-information



Approximate Floor Area
1,020 sq. ft.
(94.8 sq. m.)



Canary Wharf & Docklands Office
2 Westferry Road, Canary Wharf, London E14 8JT

t: 020 7537 9859 e: canarywharf@alexneil.com

Disclaimer: Property descriptions are subjective and used in good faith as an opinion rather than statements of fact. The owner provided information relating to title, tenure, service charges and ground rent information. Therefore, please make specific enquiries to ensure that our descriptions match your expectations of the property. Floor plan measurements are approximate and for illustrative purposes only. Furthermore, we have not tested any services, systems or appliances at this property. And we strongly recommend that you verify all the provided information on inspection and that your surveyor and conveyancer further confirm details. Also, market conditions and property values regularly fluctuate. And showcased sold properties demonstrate our previous successes rather than indicate live property values. *As advised by the owner. **Property sold subject to contract.

ALEX NEIL

ESTATE AGENTS SINCE 1984