



GRAHAM COURT SE14  
**1 bedroom apartment**

**£250,000**  
SOLD

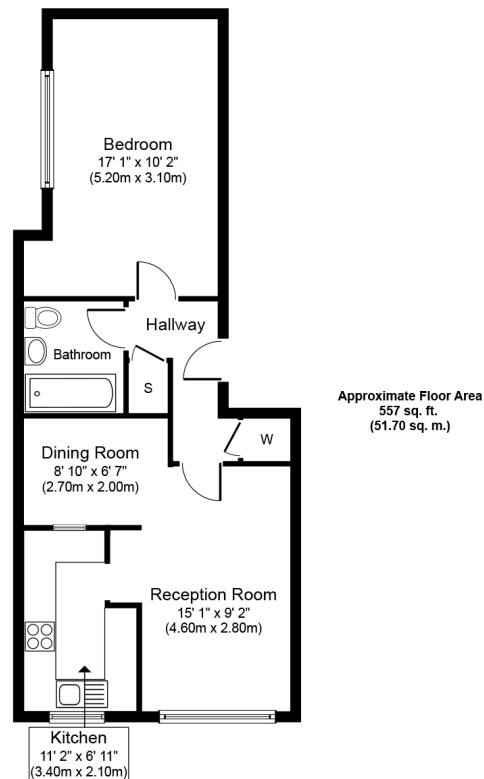




# GRAHAM COURT SE14

An attractive one bedroom property, located within the sought after Graham Court. Internally comprising a large open plan kitchen living room, a large master bedroom and a modern three piece bathroom. Benefits include wooden flooring, double glazing, storage space, secure entry phone system and communal gardens. Conveniently located for travel connections across London and with easy access to a selection of local amenities. The green space of Bridge Meadows is also within easy reach, offering the perfect spot for an uplifting run or a leisurely walk at the weekend. Viewings are highly recommended.

Borough: Lewisham\* Council Tax: B\* EPC: TBA Lease Term: 72 years\* Service Charge: £1,368\* Ground Rent: £80\*  
Nearest Station: South Bermondsey (0.45 miles) Material Information: [www.alexneil.com/material-information](http://www.alexneil.com/material-information)



**Rotherhithe & Bermondsey Office**  
146 Lower Road, London SE16 2UG

t: 020 7237 6767 e: [rotherhithe@alexneil.com](mailto:rotherhithe@alexneil.com)

Disclaimer: Property descriptions are subjective and used in good faith as an opinion rather than statements of fact. The owner provided information relating to title, tenure, service charges and ground rent information. Therefore, please make specific enquiries to ensure that our descriptions match your expectations of the property. Floor plan measurements are approximate and for illustrative purposes only. Furthermore, we have not tested any services, systems or appliances at this property. And we strongly recommend that you verify all the provided information on inspection and that your surveyor and conveyancer further confirm details. Also, market conditions and property values regularly fluctuate. And showcased sold properties demonstrate our previous successes rather than indicate live property values. \*As advised by the owner. \*\*Property sold subject to contract.



# ALEX NEIL

ESTATE AGENTS SINCE 1984

2024 signifies our **40th Anniversary**, and we are immensely proud to have reached this impressive longevity milestone. In celebration, we launched an **exceptional promotion** for sellers, affording them increased marketing exposure for free!

**40 years of expertise:** With four decades of experience, we bring a wealth of knowledge and expertise. Our durability is a testament to the trust satisfied clients place in us. We understand the nuances of the diverse neighbourhoods we cover. Our local expertise allows us to provide tailored solutions, whether you're buying or selling, allowing you to move with confidence.



ALEX NEIL

ESTATE AGENTS SINCE 1984

[www.alexneil.com](http://www.alexneil.com)