



GALSWORTHY AVENUE E14
3 bedroom terraced house

£635,000
SOLD

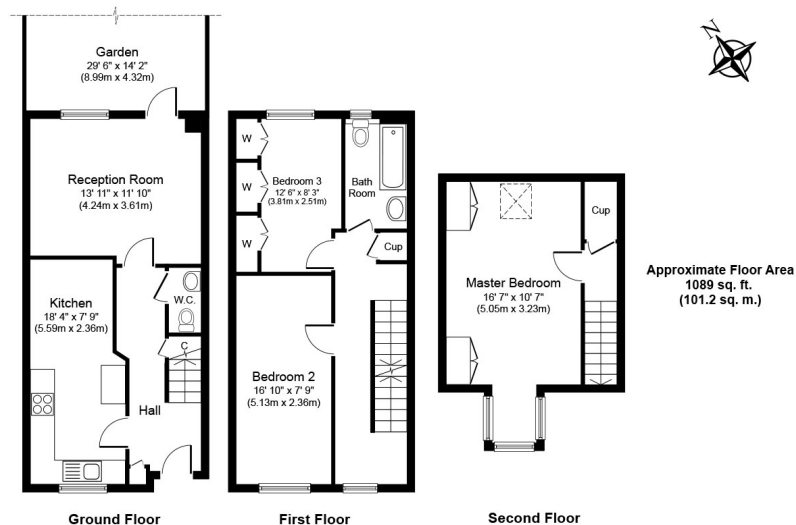


GALSWORTHY AVENUE E14

A larger-than-average, three-bedroom terraced house in Galsworthy Avenue, Limehouse E14, is in pristine decorative condition. The property is perfectly positioned within a quiet residential road and is ideally situated for swift access to the vast array of amenities of Canary Wharf and The City and enviably falls within the catchment of Sir William Burrough School. The spacious accommodation includes a large bright lounge, a separate well-presented kitchen/diner, a downstairs cloakroom, three spacious bedrooms and a family bathroom. To the property's rear is a private, manicured garden, creating an additional comfortable space to relax and unwind. Also, having off-road parking, copious built-in storage and being maintained to a high standard, this property would make the ideal family home. We recommend your earliest internal inspection.

Borough: Tower Hamlets* Council Tax: D* EPC: TBA

Nearest Station: Limehouse (0.32 miles) Material Information: www.alexneil.com/material-information



Canary Wharf & Docklands Office
2 Westferry Road, Canary Wharf, London E14 8JT

t: 020 7537 9859 e: canarywharf@alexneil.com

Disclaimer: Property descriptions are subjective and used in good faith as an opinion rather than statements of fact. The owner provided information relating to title, tenure, service charges and ground rent information. Therefore, please make specific enquiries to ensure that our descriptions match your expectations of the property. Floor plan measurements are approximate and for illustrative purposes only. Furthermore, we have not tested any services, systems or appliances at this property. And we strongly recommend that you verify all the provided information on inspection and that your surveyor and conveyancer further confirm details. Also, market conditions and property values regularly fluctuate. And showcased sold properties demonstrate our previous successes rather than indicate live property values. *As advised by the owner. **Property sold subject to contract.

ALEX NEIL

ESTATE AGENTS SINCE 1984

2024 signifies our **40th Anniversary**, and we are immensely proud to have reached this impressive longevity milestone. In celebration, we launched an **exceptional promotion** for sellers, affording them increased marketing exposure for free!

40 years of expertise: With four decades of experience, we bring a wealth of knowledge and expertise. Our durability is a testament to the trust satisfied clients place in us. We understand the nuances of the diverse neighbourhoods we cover. Our local expertise allows us to provide tailored solutions, whether you're buying or selling, allowing you to move with confidence.



ALEX NEIL

ESTATE AGENTS SINCE 1984

www.alexneil.com